

Datasheet for ABIN2792656
anti-EN1 antibody (C-Term)



[Go to Product page](#)

1 Image 1 Publication

Overview

Quantity:	100 µL
Target:	EN1
Binding Specificity:	C-Term
Reactivity:	Guinea Pig, Rabbit
Host:	Rabbit
Clonality:	Polyclonal
Conjugate:	This EN1 antibody is un-conjugated
Application:	Western Blotting (WB)

Product Details

Immunogen:	The immunogen is a synthetic peptide directed towards the C terminal region of human EN1
Sequence:	LMGSANGGPV VKTDSQQPLV WPAWVYCTRY SDRPSSGPRT RKLKKKKNEK
Cross-Reactivity:	Chicken, Human, Mouse (Murine)
Predicted Reactivity:	Guinea Pig: 93%, Rabbit: 86%
Characteristics:	This is a rabbit polyclonal antibody against EN1. It was validated on Western Blot using a cell lysate as a positive control.
Purification:	Affinity Purified

Target Details

Target:	EN1
---------	-----

Target Details

Alternative Name:	Engrailed-1 / EN1 (EN1 Products)
Background:	<p>Homeobox-containing genes are thought to have a role in controlling development. In Drosophila, the 'engrailed' (en) gene plays an important role during development in segmentation, where it is required for the formation of posterior compartments. Different mutations in the mouse homologs, En1 and En2, produced different developmental defects that frequently are lethal. The human engrailed homologs 1 and 2 encode homeodomain-containing proteins and have been implicated in the control of pattern formation during development of the central nervous system. Homeobox-containing genes are thought to have a role in controlling development. In Drosophila, the 'engrailed' (en) gene plays an important role during development in segmentation, where it is required for the formation of posterior compartments. Different mutations in the mouse homologs, En1 and En2, produced different developmental defects that frequently are lethal. The human engrailed homologs 1 and 2 encode homeodomain-containing proteins and have been implicated in the control of pattern formation during development of the central nervous system. Publication Note: This RefSeq record includes a subset of the publications that are available for this gene. Please see the Entrez Gene record to access additional publications.</p> <p>Alias Symbols: -</p> <p>Protein Interaction Partner: TLE1, PAX6, JUN,</p> <p>Protein Size: 392</p>
Molecular Weight:	40 kDa
Gene ID:	2019
NCBI Accession:	NM_001426 , NP_001417
UniProt:	Q05925
Pathways:	Dopaminergic Neurogenesis

Application Details

Application Notes:	<p>WB Suggested Anti-EN1 Antibody Titration: 0.2-1 µg/mL</p> <p>ELISA Titer: 1:312500</p> <p>Positive Control: HepG2 cell lysate.</p> <p>Optimal working dilutions should be determined experimentally by the investigator.</p>
Comment:	Antigen size: 392 AA
Restrictions:	For Research Use only

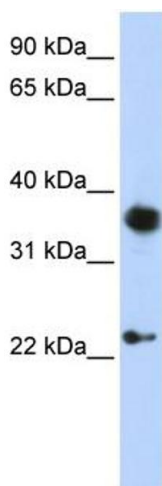
Handling

Format:	Liquid
Concentration:	Lot specific
Buffer:	Liquid. Purified antibody supplied in 1x PBS buffer with 0.09 % (w/v) sodium azide and 2 % sucrose.
Preservative:	Sodium azide
Precaution of Use:	This product contains Sodium azide: a POISONOUS AND HAZARDOUS SUBSTANCE which should be handled by trained staff only.
Handling Advice:	Avoid repeated freeze-thaw cycles.
Storage:	-20 °C
Storage Comment:	For short term use, store at 2-8°C up to 1 week. For long term storage, store at -20°C in small aliquots to prevent freeze-thaw cycles.

Publications

Product cited in:	Beltran, Graves, Blancafort: "Novel role of Engrailed 1 as a prosurvival transcription factor in basal-like breast cancer and engineering of interference peptides block its oncogenic function." in: Oncogene , Vol. 33, Issue 39, pp. 4767-77, (2014) (PubMed).
-------------------	--

Images



Western Blotting

Image 1. WB Suggested Anti-EN1 Antibody Titration: 0.2-1 ug/ml ELISA Titer: 1:312500 Positive Control: HepG2 cell lysate