



[Go to Product page](#)

Datasheet for ABIN2792664
anti-Id2 antibody (Middle Region)

3 Images

Overview

Quantity:	100 µL
Target:	Id2
Binding Specificity:	Middle Region
Reactivity:	Human, Rat, Mouse, Cow, Pig
Host:	Rabbit
Clonality:	Polyclonal
Conjugate:	This Id2 antibody is un-conjugated
Application:	Western Blotting (WB), Immunohistochemistry (IHC)

Product Details

Immunogen:	The immunogen is a synthetic peptide directed towards the middle region of human ID2
Sequence:	TIVSLHHQRP GQNQASRTPL TTLNTDISIL SLQASEFPSE LMSNSKALC
Cross-Reactivity:	Cow (Bovine), Chicken, Human, Mouse (Murine), Pig (Porcine), Rat (Rattus)
Predicted Reactivity:	Cow: 100%, Human: 100%, Mouse: 100%, Pig: 92%, Rat: 100%
Characteristics:	This is a rabbit polyclonal antibody against ID2. It was validated on Western Blot using a cell lysate as a positive control.
Purification:	Affinity Purified

Target Details

Target:	Id2
---------	-----

Target Details

Alternative Name: ID2 / BHLHB26 ([Id2 Products](#))

Background: ID2 belongs to the inhibitor of DNA binding (ID) family, members of which are transcriptional regulators that contain a helix-loop-helix (HLH) domain but not a basic domain. Members of the ID family inhibit the functions of basic helix-loop-helix transcription factors in a dominant-negative manner by suppressing their heterodimerization partners through the HLH domains. This protein may play a role in negatively regulating cell differentiation. The protein encoded by this gene belongs to the inhibitor of DNA binding (ID) family, members of which are transcriptional regulators that contain a helix-loop-helix (HLH) domain but not a basic domain. Members of the ID family inhibit the functions of basic helix-loop-helix transcription factors in a dominant-negative manner by suppressing their heterodimerization partners through the HLH domains. This protein may play a role in negatively regulating cell differentiation. A pseudogene has been identified for this gene. Publication Note: This RefSeq record includes a subset of the publications that are available for this gene. Please see the Entrez Gene record to access additional publications.

Alias Symbols: GIG8, ID2A, ID2H, MGC26389, bHLHb26

Protein Interaction Partner: ASB4, UBC, SUV39H2, PRMT6, KDM1A, SUV39H1, TCF12, TCF3, TSTA3, MAPK8, ID2, HSPA5, RBL2, RBL1, RB1, CDK2, USP1, MAPK3, MAPK1, E2F4, SIN3A, GATA4, NKX2-5, LRIF1, PPP1CA, RBM48, NEDD9, UNC119, MSC, TCF4, ELK3, ELK4, ELK1, PAX8, PAX5, PAX2, MYF6, MYF5, MYOG,

Protein Size: 134

Molecular Weight: 15 kDa

Gene ID: 3398

NCBI Accession: [NM_002166](#), [NP_002157](#)

UniProt: [Q02363](#)

Application Details

Application Notes: WB Suggested Anti-ID2 Antibody Titration: 0.2-1 µg/mL
ELISA Titer: 1:1562500
Positive Control: Human Thymus.
Optimal working dilutions should be determined experimentally by the investigator.

Comment: Antigen size: 134 AA

Restrictions: For Research Use only

Handling

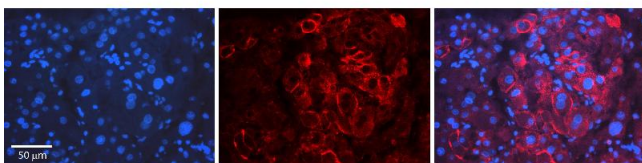
Format:	Liquid
Concentration:	Lot specific
Buffer:	Liquid. Purified antibody supplied in 1x PBS buffer with 0.09 % (w/v) sodium azide and 2 % sucrose.
Preservative:	Sodium azide
Precaution of Use:	This product contains Sodium azide: a POISONOUS AND HAZARDOUS SUBSTANCE which should be handled by trained staff only.
Handling Advice:	Avoid repeated freeze-thaw cycles.
Storage:	-20 °C
Storage Comment:	For short term use, store at 2-8°C up to 1 week. For long term storage, store at -20°C in small aliquots to prevent freeze-thaw cycles.

Images



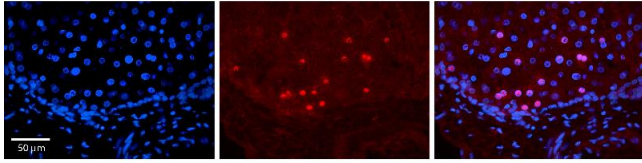
Western Blotting

Image 1. WB Suggested Anti-ID2 Antibody Titration: 0.2-1 ug/ml ELISA Titer: 1:1562500 Positive Control: Human Thymus



Immunohistochemistry

Image 2. Rabbit Anti-ID2 Antibody Formalin Fixed Paraffin Embedded Tissue: Human Liver Tissue Observed Staining: Cytoplasm Primary Antibody Concentration: 1:100 Other Working Concentrations: 1:600 Secondary Antibody: Donkey anti-Rabbit-Cy3 Secondary Antibody Concentration: 1:200 Magnification: 20X Exposure Time: 0.5 - 2.0 sec



Immunohistochemistry

Image 3. Rabbit Anti-ID2 Antibody Formalin Fixed Paraffin Embedded Tissue: Human Liver Tissue Observed Staining: Nucleus in hepatocytes Primary Antibody Concentration: 1:100 Other Working Concentrations: N/A Secondary Antibody: Donkey anti-Rabbit-Cy3 Secondary Antibody Concentration: 1:200 Magnification: 20X Exposure Time: 0.5 - 2.0 sec