



[Go to Product page](#)

Datasheet for ABIN2792668
anti-LMO2 antibody (N-Term)

2 Images

Overview

Quantity:	100 µL
Target:	LMO2
Binding Specificity:	N-Term
Reactivity:	Mouse, Rat, Rabbit, Dog, Guinea Pig
Host:	Rabbit
Clonality:	Polyclonal
Conjugate:	This LMO2 antibody is un-conjugated
Application:	Western Blotting (WB)

Product Details

Immunogen:	The immunogen is a synthetic peptide directed towards the N terminal region of human LMO2
Sequence:	GGGARAPEGV RAPAAGQPRA TKGAPPPPGT PPPSPMSSAI ERKSLDPSEE
Cross-Reactivity:	Cow (Bovine), Chicken, Human, Mouse (Murine), Rat (Rattus)
Predicted Reactivity:	Dog: 100%, Guinea Pig: 100%, Mouse: 100%, Rabbit: 100%, Rat: 100%
Characteristics:	This is a rabbit polyclonal antibody against LMO2. It was validated on Western Blot using a cell lysate as a positive control.
Purification:	Affinity Purified

Target Details

Target:	LMO2
---------	------

Target Details

Alternative Name:	Rhombotin-2 (LMO2 Products)
Background:	<p>LMO2 acts with TAL1/SCL to regulate red blood cell development. LMO2 also acts with LDB1 to maintain erythroid precursors in an immature state. LMO2 encodes a cysteine-rich, two LIM-domain protein that is required for yolk sac erythropoiesis. The LMO2 protein has a central and crucial role in hematopoietic development and is highly conserved. The LMO2 transcription start site is located approximately 25 kb downstream from the 11p13 T-cell translocation cluster (11p13 ttc), where a number T-cell acute lymphoblastic leukemia-specific translocations occur. Publication Note: This RefSeq record includes a subset of the publications that are available for this gene. Please see the Entrez Gene record to access additional publications.</p> <p>Alias Symbols: RBTN2, RBTNL1, RHOM2, TTG2</p> <p>Protein Interaction Partner: ADAMTSL4, MBIP, HOOK1, TFPT, NOTCH2NL, KRTAP10-7, CCDC36, NUTM1, SPERT, FAM154A, CLHC1, KRT40, SSX2IP, CMTM5, MRFAP1L1, IFT43, C1orf94, LZTS2, TSC22D4, DBF4B, CCDC33, RINT1, NIF3L1, TRIM54, AGTRAP, ZFP64, BANP, STAT3, STAT1, SOX5, SKP1, ROCK1, REL, PRKG1,</p> <p>Protein Size: 158</p>
Molecular Weight:	18 kDa
Gene ID:	4005
NCBI Accession:	NM_005574 , NP_005565
UniProt:	P25791
Pathways:	Chromatin Binding

Application Details

Application Notes:	<p>WB Suggested Anti-LMO2 Antibody Titration: 0.2-1 µg/mL</p> <p>ELISA Titer: 1:1562500</p> <p>Positive Control: Human kidney.</p> <p>Optimal working dilutions should be determined experimentally by the investigator.</p>
Comment:	Antigen size: 158 AA
Restrictions:	For Research Use only

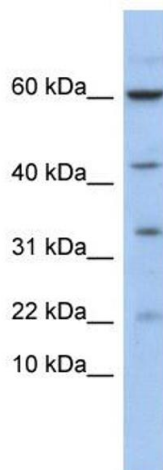
Handling

Format:	Liquid
Concentration:	Lot specific

Handling

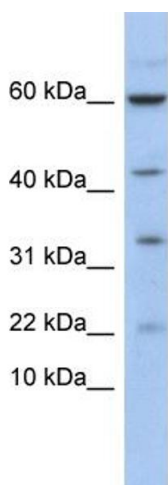
Buffer:	Liquid. Purified antibody supplied in 1x PBS buffer with 0.09 % (w/v) sodium azide and 2 % sucrose.
Preservative:	Sodium azide
Precaution of Use:	This product contains Sodium azide: a POISONOUS AND HAZARDOUS SUBSTANCE which should be handled by trained staff only.
Handling Advice:	Avoid repeated freeze-thaw cycles.
Storage:	-20 °C
Storage Comment:	For short term use, store at 2-8°C up to 1 week. For long term storage, store at -20°C in small aliquots to prevent freeze-thaw cycles.

Images



Western Blotting

Image 1. WB Suggested Anti-LMO2 Antibody Titration: 0.2-1 ug/ml ELISA Titer: 1:1562500 Positive Control: Human kidney



Rabbit Anti-LMO2 Antibody
Catalog Number: P100952
Lot Number: QC0952
Lane: Fetal Kidney Lysate

Antibody Titration: 1.0µg/ml
Gel Concentration: 10-20%

Western Blotting

Image 2. WB Suggested Anti-LMO2
Antibody Titration: 0.2-1 µg/mL ELISA Titer: 1:1562500
Positive Control: Human kidney