

Datasheet for ABIN2792672
anti-OTX1 antibody (N-Term)



[Go to Product page](#)

1 Image

Overview

Quantity:	100 µL
Target:	OTX1
Binding Specificity:	N-Term
Reactivity:	Human, Rat, Mouse, Dog, Cow, Zebrafish (Danio rerio), Guinea Pig
Host:	Rabbit
Clonality:	Polyclonal
Conjugate:	This OTX1 antibody is un-conjugated
Application:	Western Blotting (WB)

Product Details

Immunogen:	The immunogen is a synthetic peptide directed towards the N terminal region of human OTX1
Sequence:	KINLPESRVQ VWFKNRRAKC RQQQSGSGT KSRPAKKKSS PVRESSGSES
Cross-Reactivity:	Cow (Bovine), Dog (Canine), Human, Mouse (Murine), Rat (Rattus)
Predicted Reactivity:	Cow: 100%, Dog: 100%, Guinea Pig: 92%, Human: 100%, Mouse: 78%, Rat: 85%, Zebrafish: 85%
Characteristics:	This is a rabbit polyclonal antibody against OTX1. It was validated on Western Blot using a cell lysate as a positive control.
Purification:	Affinity Purified

Target Details

Target:	OTX1
---------	------

Target Details

Alternative Name:	OTX1 (OTX1 Products)
Background:	<p>OTX1 is a member of the bicoid sub-family of homeodomain-containing transcription factors. OTX1 acts as a transcription factor and may play a role in brain and sensory organ development. A similar protein in mice is required for proper brain and sensory organ development and can cause epilepsy. This gene encodes a member of the bicoid sub-family of homeodomain-containing transcription factors. The encoded protein acts as a transcription factor and may play a role in brain and sensory organ development. A similar protein in mice is required for proper brain and sensory organ development and can cause epilepsy. This gene encodes a member of the bicoid sub-family of homeodomain-containing transcription factors. The encoded protein acts as a transcription factor and may play a role in brain and sensory organ development. A similar protein in mice is required for proper brain and sensory organ development and can cause epilepsy.</p> <p>Alias Symbols: FLJ38361, MGC15736</p> <p>Protein Interaction Partner: KRTAP10-3, KRTAP10-8, KRTAP10-5, KRTAP10-11, KRTAP10-1, KRTAP10-9, KRTAP12-2, LCE2D, LCE2A, LCE1B, LCE4A, MGAT5B, KRTAP3-3, KRTAP4-2, KRTAP4-7, KRTAP9-4, KRTAP9-2, KRTAP4-11, GEMIN8P4, KRTAP5-6, KRTAP26-1, KRTAP12-4, KRTAP3-2, KCNK16, KRTAP4-12, RGS17, RB</p> <p>Protein Size: 354</p>
Molecular Weight:	37 kDa
Gene ID:	5013
NCBI Accession:	NM_014562 , NP_055377
UniProt:	P32242

Application Details

Application Notes:	<p>WB Suggested Anti-OTX1 Antibody Titration: 0.2-1 µg/mL</p> <p>Positive Control: HepG2 cell lysate.</p> <p>Optimal working dilutions should be determined experimentally by the investigator.</p>
Comment:	Antigen size: 354 AA
Restrictions:	For Research Use only

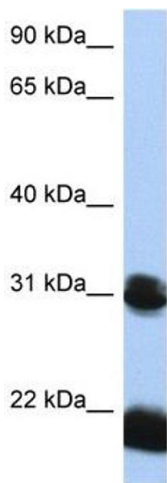
Handling

Format:	Liquid
---------	--------

Handling

Concentration:	Lot specific
Buffer:	Liquid. Purified antibody supplied in 1x PBS buffer with 0.09 % (w/v) sodium azide and 2 % sucrose.
Preservative:	Sodium azide
Precaution of Use:	This product contains Sodium azide: a POISONOUS AND HAZARDOUS SUBSTANCE which should be handled by trained staff only.
Handling Advice:	Avoid repeated freeze-thaw cycles.
Storage:	-20 °C
Storage Comment:	For short term use, store at 2-8°C up to 1 week. For long term storage, store at -20°C in small aliquots to prevent freeze-thaw cycles.

Images



Western Blotting

Image 1. WB Suggested Anti-OTX1 Antibody Titration: 0.2-1 ug/ml Positive Control: HepG2 cell lysate