

Datasheet for ABIN2792674
anti-SUB1 antibody (N-Term)[Go to Product page](#)

2 Images

Overview

Quantity:	100 µL
Target:	SUB1
Binding Specificity:	N-Term
Reactivity:	Human, Mouse, Rat, Cow, Dog
Host:	Rabbit
Clonality:	Polyclonal
Conjugate:	This SUB1 antibody is un-conjugated
Application:	Western Blotting (WB), Immunohistochemistry (IHC)

Product Details

Immunogen:	The immunogen is a synthetic peptide directed towards the N terminal region of human PC4
Sequence:	MPKSKELVSS GSSGSDSDSE VDKKLKRKKQ VAPEKPVKKQ KTGETSRALS
Cross-Reactivity:	Cow (Bovine), Dog (Canine), Chicken, Human, Mouse (Murine), Rat (Rattus)
Predicted Reactivity:	Cow: 100%, Dog: 100%, Human: 100%, Mouse: 91%, Rat: 92%
Characteristics:	This is a rabbit polyclonal antibody against PC4. It was validated on Western Blot and immunohistochemistry.
Purification:	Protein A purified

Target Details

Target:	SUB1
---------	------

Target Details

Alternative Name:	SUB1 / PC4 (SUB1 Products)
Background:	<p>PC4 is a transcriptional coactivator. General transcription factor IIH protects promoters from PC4-mediated repression by relieving the topological constraint imposed by PC4 through the ERCC3 helicase activity rather than by reducing the repressive activity of PC4 via its phosphorylation</p> <p>Alias Symbols: P15, PC4, p14</p> <p>Protein Interaction Partner: HUWE1, SUB1, UBC, rev, CLK4, CDK2, HNF4A, FN1, CSNK2A1, SMURF1, RPL18A, LAMP2, CDC5L, APP, YWHAZ, GTF3C1, ELAVL1, SUMO2, HDGF, Shoc2, Kif1c, POLR2B, POLR2A, CBX5, RCOR1, REST, BANF1, ADAP1, GTF2A1L, EP300, POU2AF1, CSTF2, TBP, TAF1, PCNA, HSF1, PSIP1, SP1</p> <p>Protein Size: 127</p>
Molecular Weight:	14 kDa
Gene ID:	10923
NCBI Accession:	NM_006713 , NP_006704
UniProt:	P53999

Application Details

Application Notes:	<p>WB Suggested Anti-PC4 Antibody Titration: 2.5 µg/mL</p> <p>Positive Control: Raji cell lysate.</p> <p>Optimal working dilutions should be determined experimentally by the investigator.</p>
Comment:	Antigen size: 127 AA
Restrictions:	For Research Use only

Handling

Format:	Liquid
Concentration:	Lot specific
Buffer:	Liquid. Purified antibody supplied in 1x PBS buffer with 0.09 % (w/v) sodium azide and 2 % sucrose.
Preservative:	Sodium azide
Precaution of Use:	This product contains Sodium azide: a POISONOUS AND HAZARDOUS SUBSTANCE which should be handled by trained staff only.

Handling

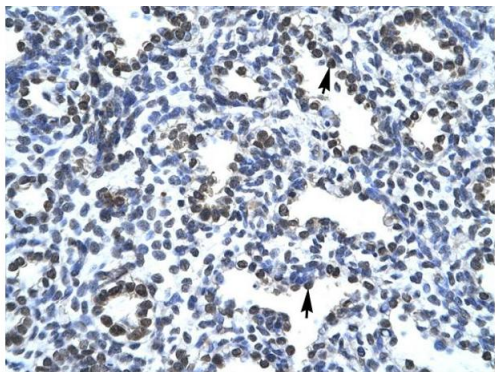
Handling Advice:	Avoid repeated freeze-thaw cycles.
Storage:	-20 °C
Storage Comment:	For short term use, store at 2-8°C up to 1 week. For long term storage, store at -20°C in small aliquots to prevent freeze-thaw cycles.

Images



Western Blotting

Image 1. WB Suggested Anti-PC4 Antibody Titration: 2.5ug/ml Positive Control: Raji cell lysate There is BioGPS gene expression data showing that SUB1 is expressed in Raji



Immunohistochemistry

Image 2. Human Lung

Rabbit Anti-PC4 Antibody
Catalog Number: P100959
Lot Number: QC0959
Paraffin Embedded Tissue: Human Lung
Cells with Positive label: Alveolar cells (Indicated with Arrows)
Antibody Concentration: 4.0-8.0 µg/ml
Magnification: 400X