



[Go to Product page](#)

Datasheet for ABIN2792675
anti-SUB1 antibody (Middle Region)

2 Images

Overview

Quantity:	100 µL
Target:	SUB1
Binding Specificity:	Middle Region
Reactivity:	Human, Mouse, Rat, Cow, Dog, Zebrafish (Danio rerio), Saccharomyces cerevisiae
Host:	Rabbit
Clonality:	Polyclonal
Conjugate:	This SUB1 antibody is un-conjugated
Application:	Western Blotting (WB), Immunohistochemistry (IHC)

Product Details

Immunogen:	The immunogen is a synthetic peptide directed towards the middle region of human PC4
Sequence:	NMFQIGKMRY VSVRDFKGV LIDIREYWMD PEGEMKGRK GISLNPEQWS
Cross-Reactivity:	Cow (Bovine), Dog (Canine), Chicken, Human, Mouse (Murine), Rat (Rattus)
Predicted Reactivity:	Cow: 100%, Dog: 100%, Human: 100%, Mouse: 100%, Rat: 100%, Yeast: 91%, Zebrafish: 100%
Characteristics:	This is a rabbit polyclonal antibody against PC4. It was validated on Western Blot and immunohistochemistry.
Purification:	Protein A purified

Target Details

Target:	SUB1
---------	------

Target Details

Alternative Name: [SUB1 / PC4 \(SUB1 Products\)](#)

Background: PC4 (activated RNA polymerase II transcription cofactor 4) is a transcriptional coactivator, possessing the ability to suppress promoter-driven as well as nonspecific transcription via its DNA binding activity. The repressive activity of PC4 on promoter-driven transcription is alleviated by transcription factor TFIIH. TFIIH protects promoters from PC4-mediated repression by relieving the topological constraint imposed by PC4 through the ERCC3 helicase activity.

Alias Symbols: P15, PC4, p14

Protein Interaction Partner: HUWE1, SUB1, UBC, rev, CLK4, CDK2, HNF4A, FN1, CSNK2A1, SMURF1, RPL18A, LAMP2, CDC5L, APP, YWHAZ, GTF3C1, ELAVL1, SUMO2, HDGF, Shoc2, Kif1c, POLR2B, POLR2A, CBX5, RCOR1, REST, BANF1, ADAP1, GTF2A1L, EP300, POU2AF1, CSTF2, TBP, TAF1, PCNA, HSF1, PSIP1, SP1

Protein Size: 127

Molecular Weight: 14 kDa

Gene ID: 10923

NCBI Accession: [NM_006713, NP_006704](#)

UniProt: [P53999](#)

Application Details

Application Notes: WB Suggested Anti-PC4 Antibody Titration: 0.5-1.0 µg/mL
Positive Control: HepG2 cell lysate.
Optimal working dilutions should be determined experimentally by the investigator.

Comment: Antigen size: 127 AA

Restrictions: For Research Use only

Handling

Format: Liquid

Concentration: Lot specific

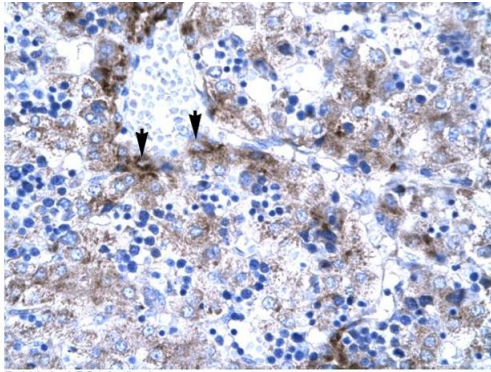
Buffer: Liquid. Purified antibody supplied in 1x PBS buffer with 0.09 % (w/v) sodium azide and 2 % sucrose.

Preservative: Sodium azide

Handling

Precaution of Use:	This product contains Sodium azide: a POISONOUS AND HAZARDOUS SUBSTANCE which should be handled by trained staff only.
Handling Advice:	Avoid repeated freeze-thaw cycles.
Storage:	-20 °C
Storage Comment:	For short term use, store at 2-8°C up to 1 week. For long term storage, store at -20°C in small aliquots to prevent freeze-thaw cycles.

Images



Rabbit Anti-PC4 Antibody
Catalog Number: P100960
Lot Number: QC0960
Paraffin Embedded Tissue: Human Liver
Cells with Positive label: Hepatocyte (Indicated with Arrows)
Antibody Concentration: 4.0-8.0 µg/ml
Magnification: 400X

Immunohistochemistry

Image 1. Human Liver



Western Blotting

Image 2. WB Suggested Anti-PC4 Antibody Titration: 0.5-1.0ug/ml Positive Control: HepG2 cell lysate There is BioGPS gene expression data showing that SUB1 is expressed in HepG2