

Datasheet for ABIN2792676  
**anti-SNAPC2 antibody (Middle Region)**[Go to Product page](#)

## 2 Images

## Overview

Quantity:	100 µL
Target:	SNAPC2
Binding Specificity:	Middle Region
Reactivity:	Human
Host:	Rabbit
Clonality:	Polyclonal
Conjugate:	This SNAPC2 antibody is un-conjugated
Application:	Western Blotting (WB), Immunohistochemistry (IHC)

## Product Details

Immunogen:	The immunogen is a synthetic peptide directed towards the middle region of human SNAPC2
Sequence:	STEEDFAVDF EKIYKYLSSV SRSGRSPELS AAESAVVLDL LMSLPEELPL
Cross-Reactivity:	Human
Predicted Reactivity:	Human: 100%
Characteristics:	This is a rabbit polyclonal antibody against SNAPC2. It was validated on Western Blot and immunohistochemistry.
Purification:	Affinity Purified

## Target Details

Target:	SNAPC2
---------	--------

## Target Details

Alternative Name:	SNAPC2 / SNAP45 ( <a href="#">SNAPC2 Products</a> )
Background:	<p>SNAPC2 is a component of the snRNA activating protein complex (SNAPc). SNAPC2 is exceptionally proline-rich, interacts strongly with TBP, and, other SNAPC components, is required for both RNA polymerase II and III transcription of snRNA genes.</p> <p>Alias Symbols: PTFdelta, SNAP45, PTFDELTA</p> <p>Protein Interaction Partner: TBP, SNAPC4, SNAPC3, SNAPC1,</p> <p>Protein Size: 334</p>
Molecular Weight:	35 kDa
Gene ID:	6618
NCBI Accession:	<a href="#">NM_003083</a> , <a href="#">NP_003074</a>
UniProt:	<a href="#">Q13487</a>
Pathways:	<a href="#">Chromatin Binding</a>

## Application Details

Application Notes:	<p>WB Suggested Anti-SNAPC2 Antibody Titration: 0.2-1 µg/mL</p> <p>ELISA Titer: 1:1562500</p> <p>Positive Control: Jurkat cell lysate.</p> <p>Optimal working dilutions should be determined experimentally by the investigator.</p>
Comment:	Antigen size: 334 AA
Restrictions:	For Research Use only

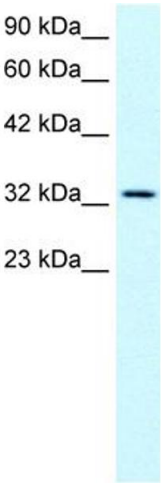
## Handling

Format:	Liquid
Concentration:	Lot specific
Buffer:	Liquid. Purified antibody supplied in 1x PBS buffer with 0.09 % (w/v) sodium azide and 2 % sucrose.
Preservative:	Sodium azide
Precaution of Use:	This product contains Sodium azide: a POISONOUS AND HAZARDOUS SUBSTANCE which should be handled by trained staff only.
Handling Advice:	Avoid repeated freeze-thaw cycles.

## Handling

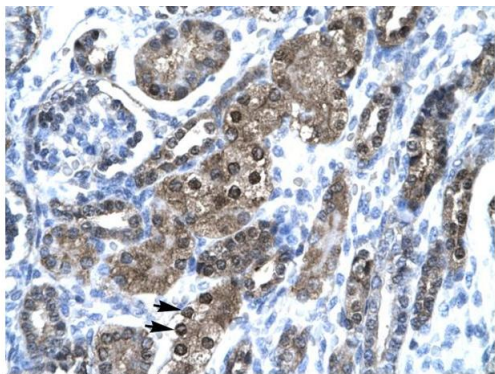
Storage:	-20 °C
Storage Comment:	For short term use, store at 2-8°C up to 1 week. For long term storage, store at -20°C in small aliquots to prevent freeze-thaw cycles.

## Images



### Western Blotting

**Image 1.** WB Suggested Anti-SNAPC2 Antibody Titration: 0.2-1 ug/ml ELISA Titer: 1:1562500 Positive Control: Jurkat cell lysate



### Immunohistochemistry

**Image 2.** Human kidney

Rabbit Anti-SNAPC2 Antibody  
Catalog Number: P100961  
Lot Number: QC0961  
Paraffin Embedded Tissue: Human Kidney  
Cells with Positive label: Epithelial cells of renal tubule (Indicated with Arrows)  
Antibody Concentration: 4.0-8.0 µg/ml  
Magnification: 400X