

Datasheet for ABIN2792692

anti-GTF2B antibody (N-Term)

3 Images

1 Publication

[Go to Product page](#)

Overview

Quantity:	100 µL
Target:	GTF2B
Binding Specificity:	N-Term
Reactivity:	Human, Mouse, Dog, Zebrafish (Danio rerio), Horse, Guinea Pig, Rabbit
Host:	Rabbit
Clonality:	Polyclonal
Conjugate:	This GTF2B antibody is un-conjugated
Application:	Western Blotting (WB), Immunohistochemistry (IHC)

Product Details

Immunogen:	The immunogen is a synthetic peptide directed towards the N terminal region of human GTF2B
Sequence:	NLPRNIVDRT NNLFKQVYEQ KSLKGRANDA IASACLYIAC RQEGVPRTFK
Cross-Reactivity:	Cow (Bovine), Dog (Canine), Human, Mouse (Murine), Rat (Rattus)
Predicted Reactivity:	Dog: 100%, Guinea Pig: 100%, Horse: 100%, Human: 100%, Mouse: 100%, Rabbit: 100%, Zebrafish: 92%
Characteristics:	This is a rabbit polyclonal antibody against GTF2B. It was validated on Western Blot and immunohistochemistry.
Purification:	Protein A purified

Target Details

Target:	GTF2B
Alternative Name:	GTF2B (GTF2B Products)
Background:	<p>GTF2B is the general transcription factor IIB, one of the ubiquitous factors required for transcription initiation by RNA polymerase II. The protein localizes to the nucleus where it forms a complex (the DAB complex) with transcription factors IID and IIA. Transcription factor IIB serves as a bridge between IID, the factor which initially recognizes the promoter sequence, and RNA polymerase II.</p> <p>Alias Symbols: TF2B, TFIIB</p> <p>Protein Interaction Partner: DRAP1, TNIP1, UBC, FBXO25, HNF4A, TCEA1, GTF2F2, GTF2F1, DEPDC7, SLC22A2, RELA, POLR2C, JAK3, HMGCL, SMURF1, THRA, TBP, POLR2E, SRA1, LSM4, LSM5, CIITA, NXF1, POU3F2, EP300, PSMA3, POLR2J, ESR1, UL48, NR1D2, NCOR1, TAF9, REST, tat, SAP25, MKX, CTDPI, POLR</p> <p>Protein Size: 316</p>
Molecular Weight:	35 kDa
Gene ID:	2959
NCBI Accession:	NM_001514 , NP_001505
UniProt:	Q00403

Application Details

Application Notes:	<p>WB Suggested Anti-GTF2B Antibody Titration: 4.0 µg/mL</p> <p>Positive Control: HepG2 cell lysate.</p> <p>Optimal working dilutions should be determined experimentally by the investigator.</p>
Comment:	Antigen size: 316 AA
Restrictions:	For Research Use only

Handling

Format:	Liquid
Concentration:	Lot specific
Buffer:	Liquid. Purified antibody supplied in 1x PBS buffer with 0.09 % (w/v) sodium azide and 2 % sucrose.
Preservative:	Sodium azide

Handling

Precaution of Use:	This product contains Sodium azide: a POISONOUS AND HAZARDOUS SUBSTANCE which should be handled by trained staff only.
Handling Advice:	Avoid repeated freeze-thaw cycles.
Storage:	-20 °C
Storage Comment:	For short term use, store at 2-8°C up to 1 week. For long term storage, store at -20°C in small aliquots to prevent freeze-thaw cycles.

Publications

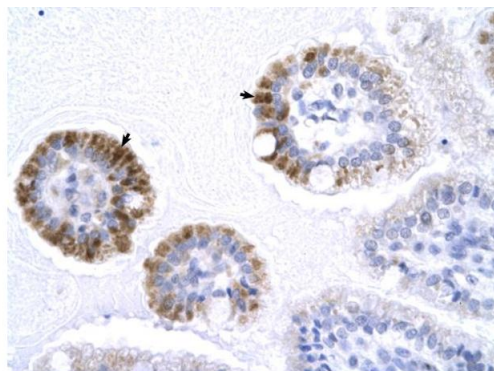
Product cited in:	Tubon, Tansey, Herr: "A nonconserved surface of the TFIIIB zinc ribbon domain plays a direct role in RNA polymerase II recruitment." in: Molecular and cellular biology , Vol. 24, Issue 7, pp. 2863-74, (2004) (PubMed).
-------------------	--

Images



Western Blotting

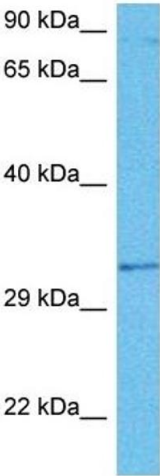
Image 1. WB Suggested Anti-GTF2B Antibody Titration:
4.0ug/ml Positive Control: HepG2 cell lysate



Rabbit Anti-GTF2B Antibody
Catalog Number: P100990
Lot Number: QC0990
Paraffin Embedded Tissue: Human Intestine
Cells with Positive label: Epithelial cells of intestinal villus (Indicated with Arrows)
Antibody Concentration: 4.0-8.0 µg/ml
Magnification: 400X

Immunohistochemistry

Image 2. Human Intestine



Western Blotting

Image 3. Host: Rat Target Name: GTF2B Sample Tissue: Rat Brain Antibody Dilution: 1ug/ml