

Datasheet for ABIN2792698

anti-Nucleobindin 1 antibody (C-Term)**1** Image**6** Publications[Go to Product page](#)

Overview

Quantity:	100 µL
Target:	Nucleobindin 1 (NUCB1)
Binding Specificity:	C-Term
Reactivity:	Human
Host:	Rabbit
Clonality:	Polyclonal
Conjugate:	This Nucleobindin 1 antibody is un-conjugated
Application:	Western Blotting (WB)

Product Details

Immunogen:	The immunogen is a synthetic peptide directed towards the C terminal region of human NUCB1
Sequence:	PAAHPEGQLK FHPDTPDDVPV PAPAGDQKEV DTSEKLLER LPEVEVPQHL
Cross-Reactivity:	Human
Predicted Reactivity:	Human: 100%
Characteristics:	This is a rabbit polyclonal antibody against NUCB1. It was validated on Western Blot using a cell lysate as a positive control.
Purification:	Affinity Purified

Target Details

Target:	Nucleobindin 1 (NUCB1)
---------	------------------------

Target Details

Alternative Name:	Nucleobindin-1 (NUCB1 Products)
Background:	<p>Nucleobindin, also known as calnuc, participates in Ca²⁺ storage in the Golgi, as well as in other biological processes that involve DNA-binding and protein-protein interactions.</p> <p>Alias Symbols: NUC, CALNUC</p> <p>Protein Interaction Partner: REL, UBC, MDM2, CTPS2, RAD23B, PRKDC, METTL1, GTF2I, CBS, XPNPEP1, WARS, PTGS2, XPO1, SET, RBL1, MYC, HIVEP1, GNAS, GNAI3, GNAI1, KLC4, PTGS1, NDN, GNAI2, GNAO1, GNAZ,</p> <p>Protein Size: 461</p>
Molecular Weight:	54 kDa
Gene ID:	4924
NCBI Accession:	NM_006184 , NP_006175
UniProt:	Q02818

Application Details

Application Notes:	<p>WB Suggested Anti-NUCB1 Antibody Titration: 0.2-1 µg/mL</p> <p>ELISA Titer: 1:1562500</p> <p>Positive Control: HepG2 cell lysate.</p> <p>Optimal working dilutions should be determined experimentally by the investigator.</p>
Comment:	Antigen size: 461 AA
Restrictions:	For Research Use only

Handling

Format:	Liquid
Concentration:	Lot specific
Buffer:	Liquid. Purified antibody supplied in 1x PBS buffer with 0.09 % (w/v) sodium azide and 2 % sucrose.
Preservative:	Sodium azide
Precaution of Use:	This product contains Sodium azide: a POISONOUS AND HAZARDOUS SUBSTANCE which should be handled by trained staff only.
Handling Advice:	Avoid repeated freeze-thaw cycles.

Handling

Storage: -20 °C

Storage Comment: For short term use, store at 2-8°C up to 1 week. For long term storage, store at -20°C in small aliquots to prevent freeze-thaw cycles.

Publications

Product cited in: Bonito-Oliva, Barbash, Sakmar, Graham: "Nucleobindin 1 binds to multiple types of pre-fibrillar amyloid and inhibits fibrillization." in: **Scientific reports**, Vol. 7, pp. 42880, (2017) ([PubMed](#)).

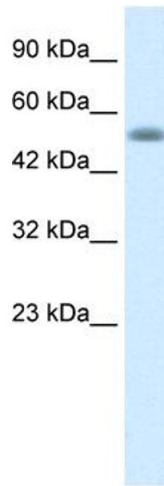
Larkin, Ribeiro, Lavoie: "Topology and membrane anchoring of the lysosomal storage disease-related protein CLN5." in: **Human mutation**, Vol. 34, Issue 12, pp. 1688-97, (2013) ([PubMed](#)).

Lin, Fischer, Lavoie, Huang, Farquhar: "Calnuc plays a role in dynamic distribution of Galphai but not Gbeta subunits and modulates ACTH secretion in AtT-20 neuroendocrine secretory cells." in: **Molecular neurodegeneration**, Vol. 4, pp. 15, (2009) ([PubMed](#)).

Valencia, Cotten, Duan, Liu: "Modulation of nucleobindin-1 and nucleobindin-2 by caspases." in: **FEBS letters**, Vol. 582, Issue 2, pp. 286-90, (2008) ([PubMed](#)).

Sugeno, Takeda, Hasegawa, Kobayashi, Kikuchi, Mori, Wakabayashi, Itoyama: "Serine 129 phosphorylation of alpha-synuclein induces unfolded protein response-mediated cell death." in: **The Journal of biological chemistry**, Vol. 283, Issue 34, pp. 23179-88, (2008) ([PubMed](#)).

There are more publications referencing this product on: [Product page](#)



Western Blotting

Image 1. WB Suggested Anti-NUCB1 Antibody Titration:
0.2-1 ug/ml ELISA Titer: 1:1562500 Positive Control:
HepG2 cell lysate