

Datasheet for ABIN2800693

anti-FOLR2 antibody**2** Images[Go to Product page](#)

Overview

Quantity:	0.1 mg
Target:	FOLR2
Reactivity:	Human
Host:	Mouse
Clonality:	Monoclonal
Conjugate:	This FOLR2 antibody is un-conjugated
Application:	Western Blotting (WB), Flow Cytometry (FACS), Immunoprecipitation (IP), Immunocytochemistry (ICC)

Product Details

Immunogen:	BW5147alpha,beta- cells
Clone:	EM-35
Isotype:	IgG1
Specificity:	The mouse monoclonal antibody EM-35 recognizes an extracellular epitope on FOLR2, a 30-40 kDa cell surface protein serving as a receptor for folic acid.
No Cross-Reactivity:	Mouse
Cross-Reactivity (Details):	Human
Purification:	Purified by protein-A affinity chromatography.
Purity:	> 95 % (by SDS-PAGE)

Target Details

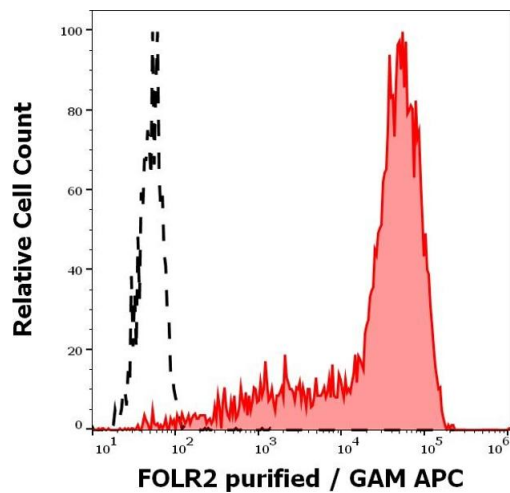
Target:	FOLR2
Alternative Name:	FOLR2 (FOLR2 Products)
Background:	Folate receptor beta,FOLR2 (folate receptor beta) is a cell surface protein that was originally thought to be specific for placenta, but it can be also expressed in other tissues, including hematopoietic cells. Its expression is increased in malignant tissues. FOLR2 may play a role in the transport of methotrexate in synovial macrophages in rheumatoid arthritis patients. FOLR2 is a marker for macrophages generated in the presence of M-CSF (M2), including M2-like tumor-associated macrophages, which exert potent immunosuppressive functions within the tumor environment, but not GM-CSF (M1), and whose expression correlates with increased folate uptake ability.,Folate receptor beta, FBP, FR-P3, FR-BETA, BETA-HFR, FBP/PL-1
Gene ID:	2350
UniProt:	P14207
Pathways:	Dicarboxylic Acid Transport

Application Details

Application Notes:	Western blotting: Non-reducing conditions. Flow cytometry: Recommended dilution: 1-4 µg/mL
Restrictions:	For Research Use only

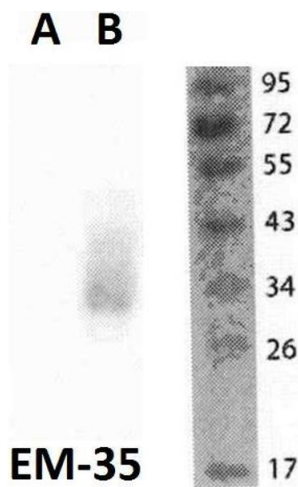
Handling

Concentration:	1 mg/mL
Buffer:	Phosphate buffered saline (PBS), pH 7.4, 15 mM sodium azide
Preservative:	Sodium azide
Precaution of Use:	This product contains Sodium azide: a POISONOUS AND HAZARDOUS SUBSTANCE which should be handled by trained staff only.
Storage:	4 °C
Storage Comment:	Store at 2-8°C. Do not freeze.



Flow Cytometry

Image 1. Separation of FOLR2 transfected BW5147 cells stained using anti-FOLR2 (EM-35) purified antibody (concentration in sample 4 µg/mL, GAM APC, red-filled) from FOLR2 transfected BW5147 cells unstained by primary antibody (GAM APC, black-dashed) in flow cytometry analysis (surface staining).



Western Blotting

Image 2. Western blotting analysis of FOLR2 in THP1 cells (A) and FOLR2-transfected THP1 cells (B) using anti-FOLR2 (EM-35) purified.