



[Go to Product page](#)

Datasheet for ABIN2800695
anti-FOLR2 antibody (PE)

2 Images

Overview

Quantity:	0.1 mg
Target:	FOLR2
Reactivity:	Human
Host:	Mouse
Clonality:	Monoclonal
Conjugate:	This FOLR2 antibody is conjugated to PE
Application:	Flow Cytometry (FACS)

Product Details

Immunogen:	BW5147alpha,beta- cells
Clone:	EM-35
Isotype:	IgG1
Specificity:	The mouse monoclonal antibody EM-35 recognizes an extracellular epitope on FOLR2, a 30-40 kDa cell surface protein serving as a receptor for folic acid.
No Cross-Reactivity:	Mouse
Cross-Reactivity (Details):	Human
Purification:	Purified antibody is conjugated with R-phycoerythrin (PE) under optimum conditions. Unconjugated antibody and free fluorochrome are removed by size-exclusion chromatography.

Target Details

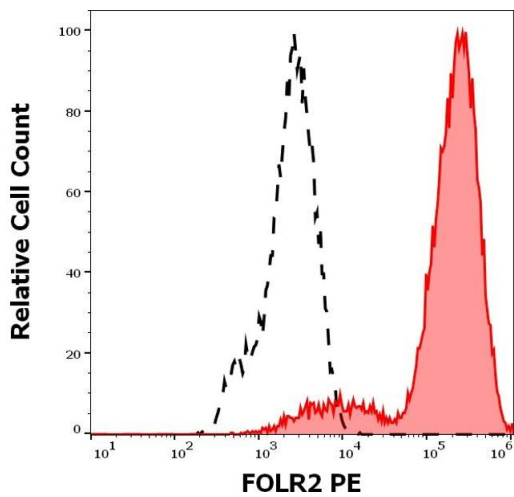
Target:	FOLR2
Alternative Name:	FOLR2 (FOLR2 Products)
Background:	Folate receptor beta,FOLR2 (folate receptor beta) is a cell surface protein that was originally thought to be specific for placenta, but it can be also expressed in other tissues, including hematopoietic cells. Its expression is increased in malignant tissues. FOLR2 may play a role in the transport of methotrexate in synovial macrophages in rheumatoid arthritis patients. FOLR2 is a marker for macrophages generated in the presence of M-CSF (M2), including M2-like tumor-associated macrophages, which exert potent immunosuppressive functions within the tumor environment, but not GM-CSF (M1), and whose expression correlates with increased folate uptake ability.,Folate receptor beta, FBP, FR-P3, FR-BETA, BETA-HFR, FBP/PL-1
Gene ID:	2350
UniProt:	P14207
Pathways:	Dicarboxylic Acid Transport

Application Details

Application Notes:	Flow cytometry: Recommended dilution: 1-5 µg/mL.
Comment:	The purified antibody is conjugated with R-Phycoerythrin (PE) under optimum conditions. The conjugate is purified by size-exclusion chromatography.
Restrictions:	For Research Use only

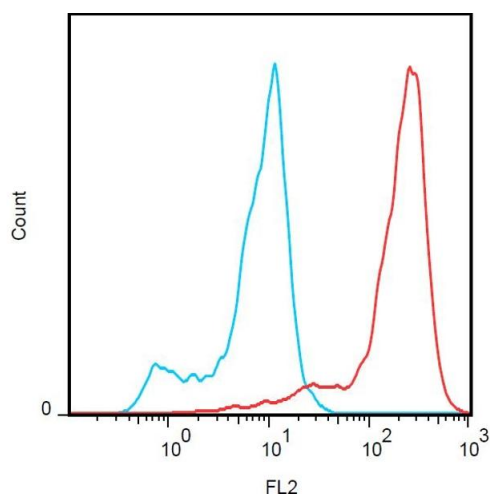
Handling

Concentration:	0.1 mg/mL
Buffer:	Stabilizing phosphate buffered saline (PBS), pH 7.4, 15 mM sodium azide
Preservative:	Sodium azide
Precaution of Use:	This product contains Sodium azide: a POISONOUS AND HAZARDOUS SUBSTANCE which should be handled by trained staff only.
Storage:	4 °C
Storage Comment:	Store at 2-8°C. Protect from prolonged exposure to light. Do not freeze.



Flow Cytometry

Image 1. Separation of cells stained using anti-human FOLR2 (EM-35) PE antibody (concentration in sample $5 \mu\text{g/mL}$, red-filled) from cells stained using mouse IgG1 isotype control (MOPC-21) PE antibody (concentration in sample $5 \mu\text{g/mL}$, same as FOLR2 PE antibody concentration, black-dashed) in flow cytometry analysis (surface staining) of FOLR2 transfected BW5147 cell suspension.



Flow Cytometry

Image 2. Flow cytometry analysis (surface staining) of FOLR2 transfectants (red) with anti-human FOLR2 (EM-35) PE, compared with blank (blue).