



[Go to Product page](#)

Datasheet for ABIN2802042

## anti-GDPD5 antibody (AA 342-369)

1 Image

1 Publication

### Overview

Quantity:	400 µL
Target:	GDPD5
Binding Specificity:	AA 342-369
Reactivity:	Human
Host:	Rabbit
Clonality:	Polyclonal
Conjugate:	This GDPD5 antibody is un-conjugated
Application:	Western Blotting (WB)

### Product Details

Immunogen:	This GDPD5 antibody is generated from rabbits immunized with a KLH conjugated synthetic peptide between 342-369 amino acids from the Central region of human GDPD5.
Clone:	RB25241
Isotype:	Ig Fraction
Purification:	This antibody is purified through a protein A column, followed by peptide affinity purification.

### Target Details

Target:	GDPD5
Alternative Name:	GDPD5 ( <a href="#">GDPD5 Products</a> )
Background:	Glycerophosphodiester phosphodiesterases (GDPDs, EC 3.1.4.46), such as GDPD5, are involved

## Target Details

---

in glycerol metabolism (Lang et al., 2008 [PubMed 17578682]).

Molecular Weight: 68586

Gene ID: 81544

NCBI Accession: [NP\\_110419](#)

UniProt: [Q8WTR4](#)

## Application Details

---

Application Notes: WB: 1:1000

Restrictions: For Research Use only

## Handling

---

Buffer: Purified polyclonal antibody supplied in PBS with 0.09 % (W/V) sodium azide.

Preservative: Sodium azide

Precaution of Use: This product contains Sodium azide: a POISONOUS AND HAZARDOUS SUBSTANCE which should be handled by trained staff only.

Storage: 4 °C, -20 °C

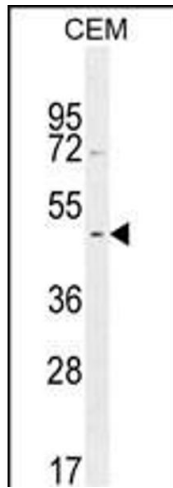
Storage Comment: Maintain refrigerated at 2-8°C for up to 6 months. For long term storage store at -20°C in small aliquots to prevent freeze-thaw cycles

Expiry Date: 6 months

## Publications

---

Product cited in: Cao, Döpkens, Krishnamachary, Vesuna, Gadiya, Lønning, Bhujwalla, Gribbestad, Glunde: "Glycerophosphodiester phosphodiesterase domain containing 5 (GDPD5) expression correlates with malignant choline phospholipid metabolite profiles in human breast cancer." in: **NMR in biomedicine**, Vol. 25, Issue 9, pp. 1033-42, (2012) ([PubMed](#)).



### Western Blotting

**Image 1.** GDPD5 Antibody (center) (ABIN2802042 and ABIN2844586) western blot analysis in CEM cell line lysates (35 µg/lane). This demonstrates the GDPD5 antibody detected the GDPD5 protein (arrow).