

Datasheet for ABIN2808292  
**anti-NSUN6 antibody (AA 51-150)**



[Go to Product page](#)

2 Images

## Overview

Quantity:	100 µL
Target:	NSUN6
Binding Specificity:	AA 51-150
Reactivity:	Human
Host:	Rabbit
Clonality:	Polyclonal
Conjugate:	This NSUN6 antibody is un-conjugated
Application:	Western Blotting (WB), Immunofluorescence (Cultured Cells) (IF (cc)), Immunofluorescence (Paraffin-embedded Sections) (IF (p)), ELISA, Immunocytochemistry (ICC), Immunohistochemistry (Frozen Sections) (IHC (fro)), Immunohistochemistry (Paraffin-embedded Sections) (IHC (p))

## Product Details

Immunogen:	KLH conjugated synthetic peptide derived from human NSUN6
Isotype:	IgG
Cross-Reactivity:	Human
Purification:	Purified by Protein A.

## Target Details

Target:	NSUN6
Alternative Name:	NSUN6 ( <a href="#">NSUN6 Products</a> )

## Target Details

---

Background: Synonyms: NOPD1, ARL5B-AS1, 4933414E04Rik, Putative methyltransferase NSUN6, NOL1/NOP2/Sun and PUA domain-containing protein 1, NOL1/NOP2/Sun domain family member 6, NSUN6  
Background: May have S-adenosyl-L-methionine-dependent methyl-transferase activity.

---

Gene ID: 221078

---

UniProt: [Q8TEA1](#)

---

## Application Details

---

Application Notes: WB 1:300-5000  
ELISA 1:500-1000  
IHC-P 1:200-400  
IHC-F 1:100-500  
IF(IHC-P) 1:50-200  
IF(IHC-F) 1:50-200  
IF(ICC) 1:50-200  
ICC 1:100-500

---

Restrictions: For Research Use only

---

## Handling

---

Format: Liquid

---

Concentration: 1 µg/µL

---

Buffer: 0.01M TBS( pH 7.4) with 1 % BSA, 0.02 % Proclin300 and 50 % Glycerol.

---

Preservative: ProClin

---

Precaution of Use: This product contains ProClin: a POISONOUS AND HAZARDOUS SUBSTANCE, which should be handled by trained staff only.

---

Storage: 4 °C, -20 °C

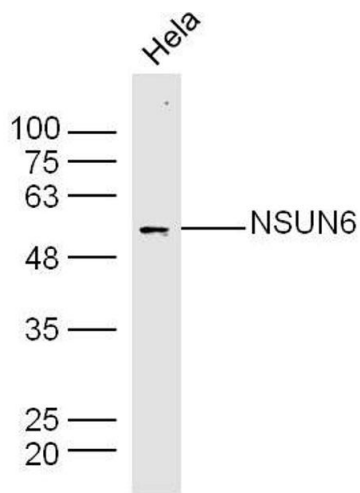
---

Storage Comment: Shipped at 4°C. Store at -20°C for one year. Avoid repeated freeze/thaw cycles.

---

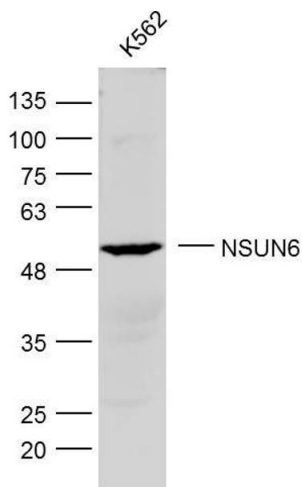
Expiry Date: 12 months

---



#### Western Blotting

**Image 1.** HeLa lysates probed with NSUN6 Polyclonal Antibody, Unconjugated at 1:300 dilution and 4°C overnight incubation. Followed by conjugated secondary antibody incubation at 1:10000 for 60 min at 37°C.



**Image 2.** K562 lysates probed with NSUN6 Polyclonal Antibody, Unconjugated at 1:300 dilution and 4°C overnight incubation. Followed by conjugated secondary antibody incubation at 1:10000 for 60 min at 37°C.