

Datasheet for ABIN285012
anti-GLB1 antibody



[Go to Product page](#)

1 Image

Overview

Quantity:	2 mL
Target:	GLB1
Reactivity:	E. coli
Host:	Rabbit
Clonality:	Polyclonal
Conjugate:	This GLB1 antibody is un-conjugated
Application:	Western Blotting (WB), ELISA, Immunohistochemistry (IHC)

Product Details

Immunogen:	Beta galactosidase antibody was raised in rabbit using beta galactosidase (E. Coli) as the immunogen.
Specificity:	Monospecific antisera by IEP.
Purification:	Ion exchange chromatography

Target Details

Target:	GLB1
Alternative Name:	beta Galactosidase (GLB1 Products)
Background:	Beta-galactosidase, also called beta-gal or Beta-gal, is a hydrolase enzyme that catalyzes the hydrolysis of Beta-galactosides into monosaccharides. Substrates of different Beta-galactosidases include ganglioside GM1, lactosylceramides, lactose, and various glycoproteins. Lactase is often confused as an alternative name for Beta-galactosidase, but it is actually

Target Details

simply a sub-class of Beta-galactosidase.

Pathways: [Glycosaminoglycan Metabolic Process](#)

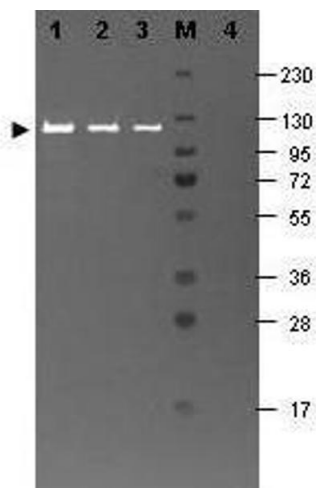
Application Details

Application Notes: ELISA: 1:65,000, WB: 1:500-1:2,000
Optimal conditions should be determined by the investigator.

Restrictions: For Research Use only

Handling

Format:	Liquid
Concentration:	Lot specific
Buffer:	Monospecific antisera, absorbed, delipidated and defibrinated, supplied in 0.02 M NaPO4, 0.12 NaCl, pH 7.2, with 0.01 % NaN3
Preservative:	Sodium azide
Precaution of Use:	This product contains Sodium Azide: a POISONOUS AND HAZARDOUS SUBSTANCE, which should be handled by trained staff only.
Handling Advice:	Avoid repeated freeze/thaw cycles. Dilute only prior to immediate use.
Storage:	4 °C/-20 °C
Storage Comment:	Store at 4 °C until reconstitution. Following reconstitution aliquot and freeze at -20 °C for long term storage.



Western Blotting

Image 1. Western blotting using Fluorescein conjugated beta Galactosidase antibody shows a band at