

Datasheet for ABIN2850854

anti-ITPR1 antibody**3** Images[Go to Product page](#)

Overview

Quantity:	50 µg
Target:	ITPR1
Reactivity:	Human, Mouse, Rat, Cow
Host:	Rabbit
Clonality:	Polyclonal
Conjugate:	This ITPR1 antibody is un-conjugated
Application:	Immunohistochemistry (IHC), Western Blotting (WB)

Product Details

Purification:	affinity purified
---------------	-------------------

Target Details

Target:	ITPR1
Alternative Name:	IP3-Receptor Type 1 (ITPR1 Products)
Background:	Synonyms: InsP3
Pathways:	Fc-epsilon Receptor Signaling Pathway , EGFR Signaling Pathway , Neurotrophin Signaling Pathway , Thyroid Hormone Synthesis , Myometrial Relaxation and Contraction , Synaptic Membrane , G-protein mediated Events , Interaction of EGFR with phospholipase C-gamma

Application Details

Application Notes:	Optimal working dilution should be determined by the investigator. This product is not tested in
--------------------	--

Application Details

IP yet. This product is not tested in ICC yet.

Restrictions: For Research Use only

Handling

Format: Lyophilized

Reconstitution: For reconstitution add 200 μ L H₂O, then aliquot and store at -20 °C until use.

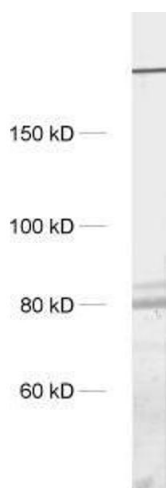
Buffer: PBS

Handling Advice: Affinity purified antibodies are less robust than antisera, since protease inhibitors are also removed during purification. Hence, storage at 4 °C for prolonged periods (i.e. several weeks), is not recommended.

Storage: -20 °C

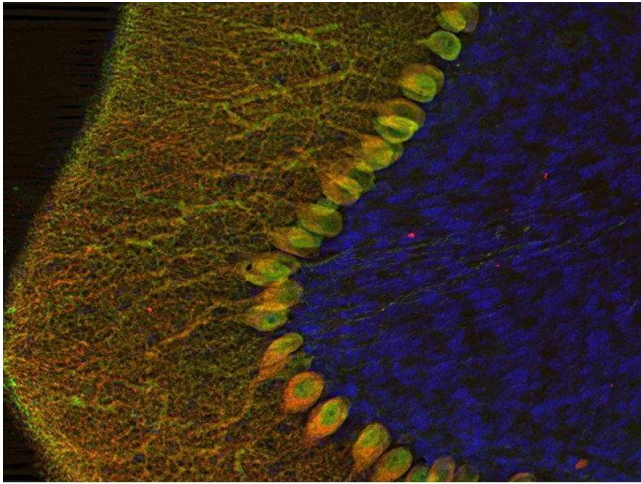
Storage Comment: Unlabeled lyophilized antibodies are stable in this form without loss of quality at ambient temperatures for several weeks or even months. They can be stored at 4°C for several years. Lyophilized antibodies must not be stored in the freezer, they may be destroyed!

Images



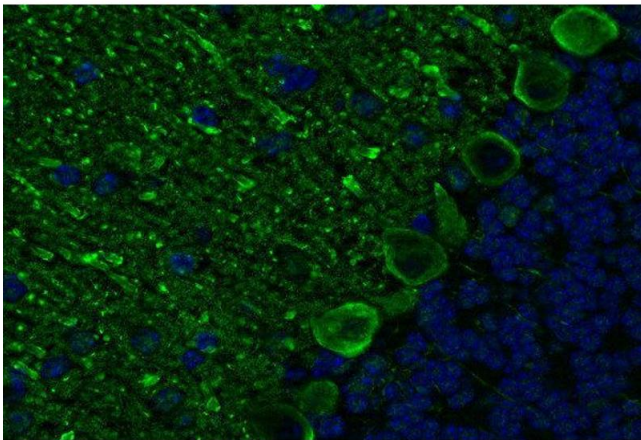
Western Blotting

Image 1. dilution: 1 : 1000, sample: crude synaptosomal fraction of rat brain (P2)



Immunohistochemistry

Image 2. Indirect immunostaining of PFA fixed mouse cerebellum section with anti IP3-receptor (dilution 1 : 200; red) and guinea pig anti-calbindin (cat. no. 214 004, dilution 1 : 200; green). Nuclei have been visualized by DAPI staining (blue).



Immunohistochemistry (Paraffin-embedded Sections)

Image 3. Indirect immunostaining PFA fixed paraffin embedded mouse cerebellum section (dilution 1 : 200; green). Nuclei have been visualized by DAPI staining (blue).