

Datasheet for ABIN2850867

**anti-BCL11B antibody**

3 Images

[Go to Product page](#)

## Overview

Quantity:	50 µg
Target:	BCL11B
Reactivity:	Mouse, Rat
Host:	Rabbit
Clonality:	Polyclonal
Application:	Immunohistochemistry (IHC), Immunocytochemistry (ICC)

## Product Details

Purification:	affinity purified antibody
---------------	----------------------------

## Target Details

Target:	BCL11B
Alternative Name:	Ctip 2 ( <a href="#">BCL11B Products</a> )
Background:	Synonyms: Bcl 11b

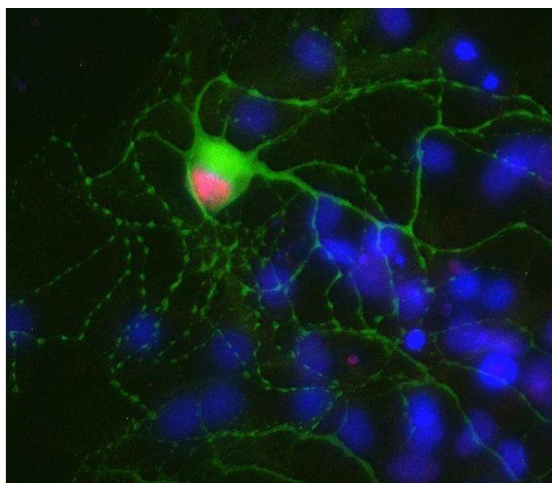
## Application Details

Application Notes:	Optimal working dilution should be determined by the investigator. It is not recommended to use this product in WB. This product is not tested in IP yet.
Restrictions:	For Research Use only

## Handling

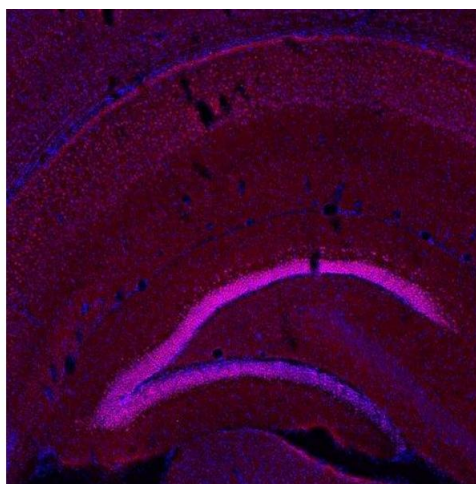
Format:	Lyophilized
Reconstitution:	For reconstitution add 200 µL H <sub>2</sub> O, then aliquot and store at -20 °C until use.
Buffer:	PBS
Handling Advice:	Affinity purified antibodies are less robust than antisera, since protease inhibitors are also removed during purification. Hence, storage at 4 °C for prolonged periods (i.e. several weeks), is not recommended.
Storage:	-20 °C
Storage Comment:	Unlabeled lyophilized antibodies are stable in this form without loss of quality at ambient temperatures for several weeks or even months. They can be stored at 4°C for several years. Lyophilized antibodies must not be stored in the freezer, they may be destroyed!

## Images



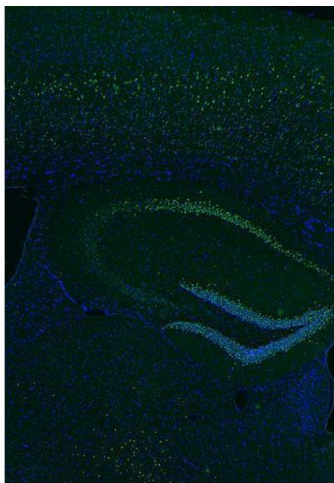
### Immunocytochemistry

**Image 1.** Indirect immunostaining of PFA fixed rat hippocampus neurons with anti-Ctip 2 (dilution 1 : 500; red) and mouse anti-MAP 2 (cat. no. 188 011, dilution 1 : 500; green). Nuclei have been visualized by DAPI staining (blue).



### Immunohistochemistry

**Image 2.** Indirect immunostaining of a PFA fixed mouse brain section (dilution 1 : 500; red). Nuclei have been visualized by DAPI staining (blue).



#### Immunohistochemistry (Paraffin-embedded Sections)

**Image 3.** Indirect immunostaining of PFA fixed paraffin embedded mouse hippocampus section (1 : 500; green). Nuclei have been visualized by DAPI staining (blue).