



[Go to Product page](#)

Datasheet for ABIN2850868
anti-BCL11B antibody

3 Images

Overview

Quantity:	50 µg
Target:	BCL11B
Reactivity:	Mouse, Rat
Host:	Guinea Pig
Clonality:	Polyclonal
Application:	Immunohistochemistry (IHC), Immunocytochemistry (ICC)

Product Details

Purification: affinity purified antibody

Target Details

Target:	BCL11B
Alternative Name:	Ctip 2 (BCL11B Products)
Background:	Synonyms: Bcl 11b

Application Details

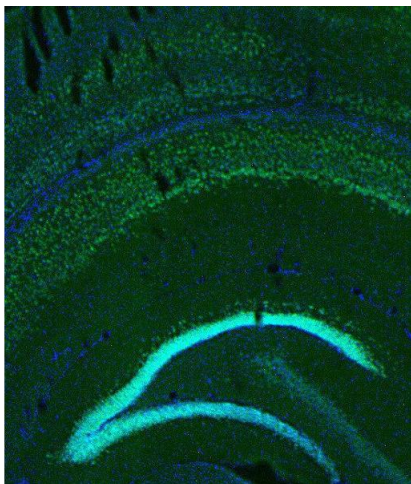
Application Notes: Optimal working dilution should be determined by the investigator. It is not recommended to use this product in WB. This product is not tested in IP yet.

Restrictions: For Research Use only

Handling

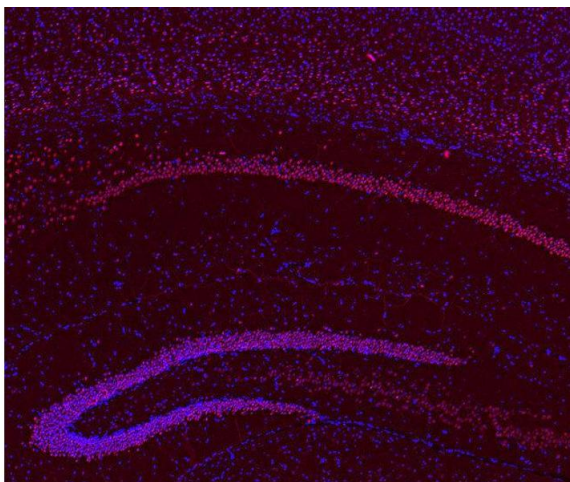
Format:	Lyophilized
Reconstitution:	For reconstitution add 200 μ L H ₂ O, then aliquot and store at -20 °C until use.
Buffer:	PBS
Handling Advice:	Affinity purified antibodies are less robust than antisera, since protease inhibitors are also removed during purification. Hence, storage at 4 °C for prolonged periods (i.e. several weeks), is not recommended.
Storage:	-20 °C
Storage Comment:	Unlabeled lyophilized antibodies are stable in this form without loss of quality at ambient temperatures for several weeks or even months. They can be stored at 4°C for several years. Lyophilized antibodies must not be stored in the freezer, they may be destroyed!

Images



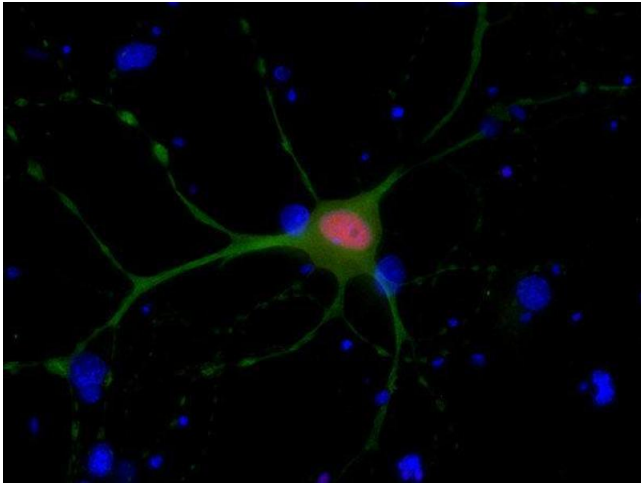
Immunohistochemistry

Image 1. Indirect immunostaining of PFA fixed mouse brain section (dilution 1 : 200; green). Nuclei have been visualized by DAPI staining (blue).



Immunohistochemistry (Paraffin-embedded Sections)

Image 2. Indirect immunostaining of PFA fixed, paraffin embedded mouse brain section (dilution 1 : 200; red). Nuclei have been visualized by DAPI staining (blue).



Immunocytochemistry

Image 3. Indirect immunostaining of PFA fixed rat hippocampus neurons with anti-Ctip 2 (dilution 1 : 500; red) and mouse anti-MAP 2 (cat. no. 188 011, dilution 1 : 500; green). Nuclei have been visualized by DAPI staining (blue).