



[Go to Product page](#)

Datasheet for ABIN2851821

anti-Cadherin 13 antibody (Internal Region)

1 Image

Overview

Quantity:	100 µg
Target:	Cadherin 13 (CDH13)
Binding Specificity:	Internal Region
Reactivity:	Human
Host:	Goat
Clonality:	Polyclonal
Conjugate:	This Cadherin 13 antibody is un-conjugated
Application:	Western Blotting (WB), Immunohistochemistry (IHC), ELISA

Product Details

Purpose:	CDH13 / H-cadherin
Immunogen:	The immunizing peptide represents the N terminus of the mature protein.
Sequence:	DSDRPERSKF RLTGK
Isotype:	IgG
Specificity:	The immunizing peptide represents the N terminus of the mature protein. This antibody is expected to recognize isoform 1, 2 and 3 (NP_001248.1, NP_001207417.1, NP_001207418.1).
Cross-Reactivity:	Human
Purification:	Purified from goat serum by ammonium sulphate precipitation followed by antigen affinity chromatography using the immunizing peptide.
Grade:	Verified

Target Details

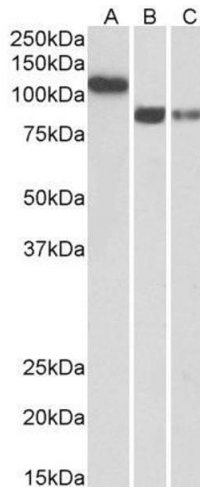
Target:	Cadherin 13 (CDH13)
Alternative Name:	CDH13 (CDH13 Products)
Background:	CDH13, cadherin 13, H-cadherin (heart), CDHH, P105, H-cadherin, T-cad, T-cadherin, cadherin-13, heart cadherin
Gene ID:	1012
NCBI Accession:	NP_001248 , NP_001207417 , NP_001207418
Pathways:	EGFR Signaling Pathway , Cell-Cell Junction Organization

Application Details

Application Notes:	Immunohistochemistry: Paraffin embedded Human Heart. Recommended concentration: 5 µg/mL. Western Blot: Approx 110 kDa band observed in Human Heart lysates and 85 kDa in Human Brain (Amygdala and Hippocampus) lysates (calculated MW of 78.3 kDa according to NP_001248.1). The observed molecular weights correspond to the glycosylated forms. Recomme Peptide ELISA: antibody detection limit dilution 1:4000.
Restrictions:	For Research Use only

Handling

Format:	Liquid
Concentration:	0.5 mg/mL
Buffer:	Supplied at 0.5 mg/mL in Tris saline, 0.02 % sodium azide, pH 7.3 with 0.5 % bovine serum albumin.
Preservative:	Sodium azide
Precaution of Use:	This product contains Sodium azide: a POISONOUS AND HAZARDOUS SUBSTANCE which should be handled by trained staff only.
Handling Advice:	Minimize freezing and thawing.
Storage:	-20 °C
Storage Comment:	Aliquot and store at -20°C, with minimal freeze/thawing. A working aliquot may be refrigerated at 4°C for a few weeks and still remain viable.



Western Blotting

Image 1. ABIN2851821 (0.3µg/ml) staining of Human Heart (A), Amygdala (B) and Hippocampus (C) lysates (35µg protein in RIPA buffer). Primary incubation was 1 hour. Detected by chemiluminescence.