



[Go to Product page](#)

Datasheet for ABIN2852027  
**anti-WFS1 antibody (N-Term)**

2 Images

Overview

Quantity:	25 µL
Target:	WFS1
Binding Specificity:	N-Term
Reactivity:	Human, Mouse, Rat
Host:	Rabbit
Clonality:	Polyclonal
Conjugate:	This WFS1 antibody is un-conjugated
Application:	Western Blotting (WB), Immunohistochemistry (IHC), Immunofluorescence (IF), Immunoprecipitation (IP), Immunocytochemistry (ICC)

Product Details

Immunogen:	A 110 amino acid region of the N-terminal region of the human WFS1 protein.
Specificity:	Reacts with human, rat and mouse 100 kDa WFS1 protein
Purification:	Antiserum

Target Details

Target:	WFS1
Alternative Name:	Wolframin ( <a href="#">WFS1 Products</a> )
Background:	Wolframin is involved in negative regulation of apoptosis and is a key component of the Wolfram syndrome 1 an insulin metabolic disorder affecting young people.

## Target Details

Pathways: [Sensory Perception of Sound](#), [Carbohydrate Homeostasis](#), [ER-Nucleus Signaling](#), [Negative Regulation of intrinsic apoptotic Signaling](#), [SARS-CoV-2 Protein Interactome](#)

## Application Details

Application Notes: Working dilution: Optimal dilution should be determined by the end user.  
The following are guidelines only :  
ICC/IF1:200 IHC1:1000 IP2  $\mu$ L WB1:500 - 1:2000

Restrictions: For Research Use only

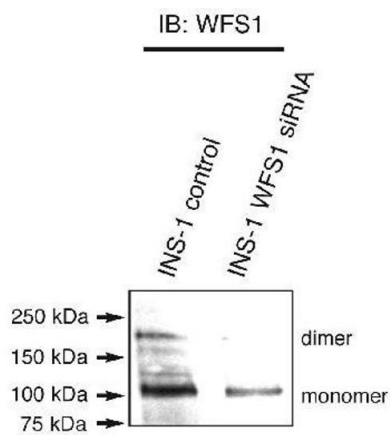
## Handling

Format: Liquid

Storage: -20 °C/-80 °C

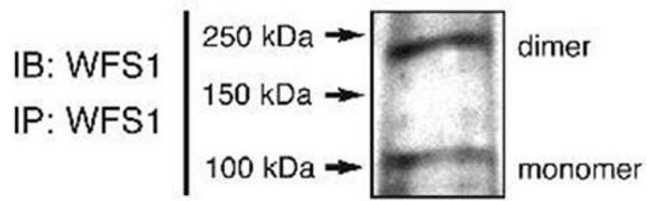
Storage Comment: Aliquot and store at -20°C or -80°C. Avoid freeze-thaw cycles.

## Images



Detection of WFS1 in insulinoma cells in WB using pab50048

Image 1.



Immunoprecipitation of WFS1 using pab50048. Precipitated lysate is INS-1

Image 2.