



Datasheet for ABIN2852383
anti-MMP14 antibody (AA 160-173)



[Go to Product page](#)

4 Images

Overview

Quantity:	250 µL
Target:	MMP14
Binding Specificity:	AA 160-173
Reactivity:	Human
Host:	Rabbit
Clonality:	Polyclonal
Conjugate:	This MMP14 antibody is un-conjugated
Application:	Immunohistochemistry (Paraffin-embedded Sections) (IHC (p))

Product Details

Immunogen:	A synthetic peptide derived from aa 160-173 of human MMP-14 protein.
Isotype:	IgG
Specificity:	Reacts with human MMP14
Purification:	Antigen affinity purified

Target Details

Target:	MMP14
Alternative Name:	MMP14 (MMP14 Products)
UniProt:	P50281
Pathways:	Autophagy

Application Details

Application Notes: Working dilution: IHC-P (10 µg/mL)

Restrictions: For Research Use only

Handling

Format: Liquid

Concentration: 0.2 mg/mL

Buffer: PBS 10 mM, pH 7.4, BSA, Sodium azide

Preservative: Sodium azide

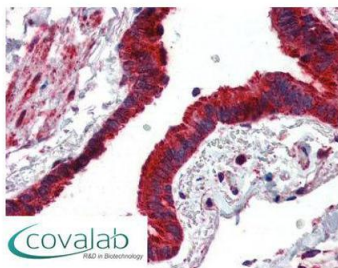
Precaution of Use: This product contains Sodium azide: a POISONOUS AND HAZARDOUS SUBSTANCE which should be handled by trained staff only.

Storage: 4 °C

Storage Comment: Store at 2°C to 8°C degrees. Do not freeze.

Images

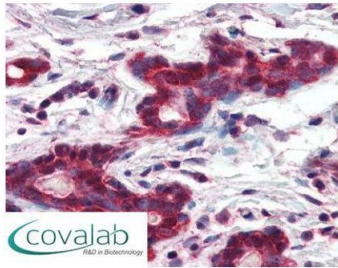
IHC : MMP14 (aa160-173) antibody (pab72739)



Anti-MMP14 antibody IHC staining of human lung.
Immunohistochemistry of formalin-fixed,
paraffin-embedded tissue after heat-induced antigen
retrieval. Antibody pab72739 concentration 10 µg/ml.

Image 1.

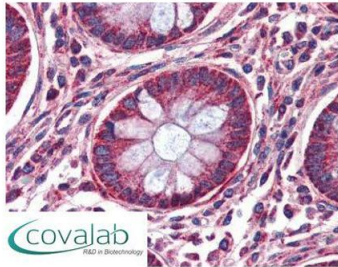
**IHC : MMP14
(aa160-173) antibody**
(pab72739)



Anti-MMP14 antibody IHC staining of human breast.
Immunohistochemistry of formalin-fixed,
paraffin-embedded tissue after heat-induced antigen
retrieval. Antibody pab72739 concentration 10 ug/ml.

Image 2.

**IHC : MMP14
(aa160-173) antibody**
(pab72739)



Anti-MMP14 antibody IHC staining of human colon.
Immunohistochemistry of formalin-fixed,
paraffin-embedded tissue after heat-induced antigen
retrieval. Antibody pab72739 concentration 10 ug/ml.

Image 3.

Please check the [product details page](#) for more images. Overall 4 images are available for ABIN2852383.