



[Go to Product page](#)

Datasheet for ABIN2852385

anti-GUCY1B3 antibody (AA 189-207)

2 Images

Overview

Quantity:	250 µL
Target:	GUCY1B3
Binding Specificity:	AA 189-207
Reactivity:	Human, Mouse, Rat
Host:	Rabbit
Clonality:	Polyclonal
Conjugate:	This GUCY1B3 antibody is un-conjugated
Application:	Immunohistochemistry (Paraffin-embedded Sections) (IHC (p))

Product Details

Immunogen:	A synthetic peptide from aa 189-207 of human guanylyl cyclase beta 1, soluble.
Isotype:	IgG
Specificity:	Reacts with human GUCY1B3
Cross-Reactivity:	Mouse (Murine), Rat (Rattus)
Cross-Reactivity (Details):	Cross reacts with mouse and rat protein.
Purification:	Antigen affinity purified

Target Details

Target:	GUCY1B3
Alternative Name:	GUCY1B3 (GUCY1B3 Products)

Target Details

UniProt:	Q02153
Pathways:	Transition Metal Ion Homeostasis

Application Details

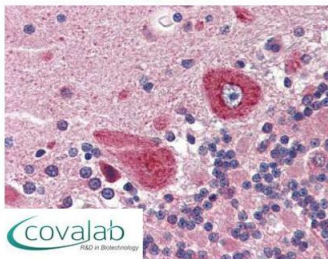
Application Notes:	Working dilution: IHC-P (10 µg/mL)
Restrictions:	For Research Use only

Handling

Format:	Liquid
Concentration:	0.2 mg/mL
Buffer:	PBS 10 mM, pH 7.4, 1 % BSA, Sodium azide 0.09 %
Preservative:	Sodium azide
Precaution of Use:	This product contains Sodium azide: a POISONOUS AND HAZARDOUS SUBSTANCE which should be handled by trained staff only.
Storage:	4 °C
Storage Comment:	Store at 2°C to 8°C degrees. Do not freeze.

Images

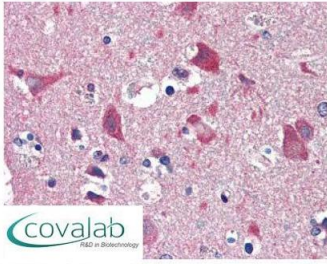
IHC : GUCY1B3 (aa189-207) antibody (pab72743)



Anti-GUCY1B3 / Guanylyl Cyclase Beta 1 antibody IHC staining of human brain, cerebellum.
Immunohistochemistry of formalin-fixed, paraffin-embedded tissue after heat-induced antigen retrieval. Antibody pab72743 concentration 10 µg/ml.

Image 1.

IHC : GUCY1B3
(aa189-207) antibody
(pab72743)



Anti-GUCY1B3 / Guanylyl Cyclase Beta 1 antibody IHC staining of human brain, cortex. Immunohistochemistry of formalin-fixed, paraffin-embedded tissue after heat-induced antigen retrieval. Antibody pab72743 concentration 10 ug/ml.

Image 2.