



[Go to Product page](#)

Datasheet for ABIN2852496

## anti-LYZ antibody

### 4 Images

#### Overview

Quantity:	0.1 mg
Target:	LYZ
Reactivity:	Human
Host:	Mouse
Clonality:	Monoclonal
Conjugate:	This LYZ antibody is un-conjugated
Application:	Immunocytochemistry (ICC), Flow Cytometry (FACS), Cytometry by Time of Flight (CyTOF)

#### Product Details

Immunogen:	human lysozyme
Clone:	LZ598-10G9
Isotype:	IgG1
Specificity:	The mouse monoclonal antibody LZ598-10G9 recognizes lysozyme, an approximately 17 kDa antibacterial enzyme, which is being used as a marker for the lineage diagnosis of acute leukemias (intracellular antigen).
Cross-Reactivity (Details):	Human
Purification:	Purified by protein-A affinity chromatography.
Purity:	> 95 % (by SDS-PAGE)

## Target Details

---

Target:	LYZ
Alternative Name:	Lysozyme ( <a href="#">LYZ Products</a> )
Background:	Lysozyme, Lysozyme is anti-bacterial enzyme found mainly in milk, saliva, tears, plasma, spleen, mucus, and leukocytes (e.g. in cytoplasmic granules of neutrophils). It damages bacterial cell walls by hydrolysis of 1,4-beta-linkages between N-acetylmuramic acid and N-acetyl-D-glucosamine residues in a peptidoglycan and between N-acetyl-D-glucosamine residues in chitodextrins. Lysozyme is part of the innate immune system. It protects wet body surfaces, such as conjunctiva. Reduced lysozyme levels have been associated with bronchopulmonary dysplasia in newborns. On the other hand high lysozyme blood levels produced for example by myelomonocytic leukemia cells can lead to kidney failure and low blood potassium.,LZM, LYZF1
Gene ID:	4069
UniProt:	<a href="#">P61626</a>

## Application Details

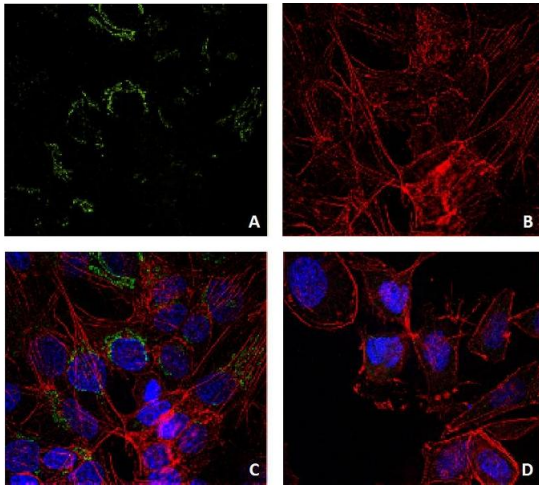
---

Application Notes:	Flow cytometry: Intracellular staining, recommended dilution: 1-12 µg/mL. Excellent. Immunohistochemistry (paraffin sections): Positive tissue: tonsil.
Restrictions:	For Research Use only

## Handling

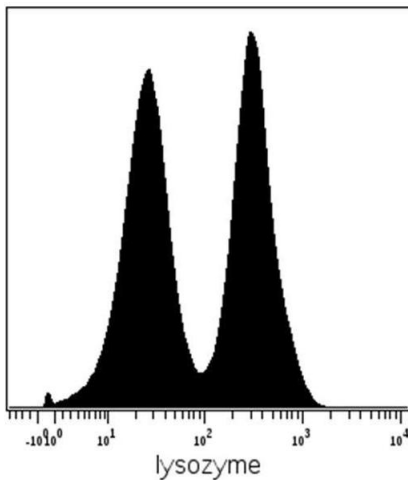
---

Concentration:	1 mg/mL
Buffer:	Phosphate buffered saline (PBS), pH 7.4, 15 mM sodium azide
Preservative:	Sodium azide
Precaution of Use:	This product contains Sodium azide: a POISONOUS AND HAZARDOUS SUBSTANCE which should be handled by trained staff only.
Storage:	4 °C
Storage Comment:	Store at 2-8°C. Do not freeze.



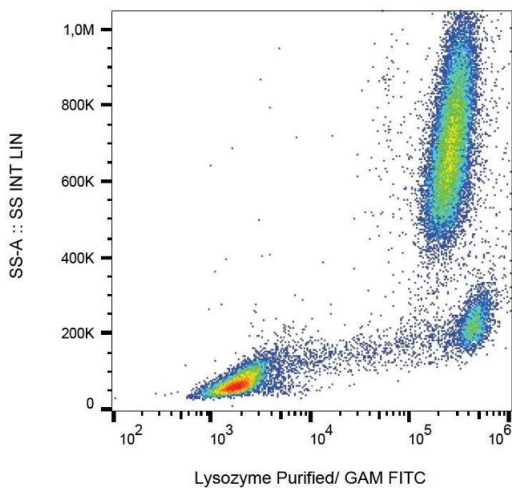
### Immunocytochemistry

**Image 1.** Immunocytochemistry staining of lysozyme (green, A, C) in Hep G2 cells (A, B, C) using mouse monoclonal antibody LZ598-10G9. Actin decorated with phalloidin (red), DNA stained with DAPI (blue). Figure D represents SK-BR-3 cells with no expression of lysozyme, stained with LZ598-10G9 antibody (no background signal).



### Mass Cytometry

**Image 2.** Intracellular staining (mass cytometry) of PBMC after Ficoll-Paque separation with anti-human lysozyme (LZ598-10G9) Gd155. Gated on native.



### Flow Cytometry

**Image 3.** Intracellular staining of lysozyme in human peripheral blood with anti-lysozyme (LZ598-10G9) purified, GAM-FITC.

Please check the [product details page](#) for more images. Overall 4 images are available for ABIN2852496.