

Datasheet for ABIN2853600
anti-Sema4a antibody (FITC)



[Go to Product page](#)

2 Images

Overview

Quantity:	100 µL
Target:	Sema4a
Reactivity:	Human, Mouse
Host:	Mouse
Clonality:	Monoclonal
Conjugate:	This Sema4a antibody is conjugated to FITC
Application:	Flow Cytometry (FACS)

Product Details

Immunogen:	Recombinant mouse Sema4A-Fc fusion protein
Clone:	5-00E-003
Isotype:	IgG1
Cross-Reactivity (Details):	Species reactivity (tested): Human, Mouse
Purification:	Protein A agarose

Target Details

Target:	Sema4a
Alternative Name:	SEMA4A (Sema4a Products)
Background:	Semaphorins are involved in guidance of axonal migration during neuronal development and in immune responses. Sema4A, a class IV semaphorin that was originally identified as SemB, is a

Target Details

transmembrane protein expressed by dendritic cells and B cells. Sema4A enhances the activation and differentiation of T cells and generation of antigen-specific T cells via interaction with its receptor, Tim-2. Synonyms: SEMAB, SEMB, Sema B, Semaphorin-4A, Semaphorin-B

Gene ID: 10090

UniProt: [Q62178](#)

Application Details

Application Notes: Optimal working dilution should be determined by the investigator.

Restrictions: For Research Use only

Handling

Concentration: 0.5 mg/mL

Buffer: PBS, 0.09 % NaN₃, 1 % BSA

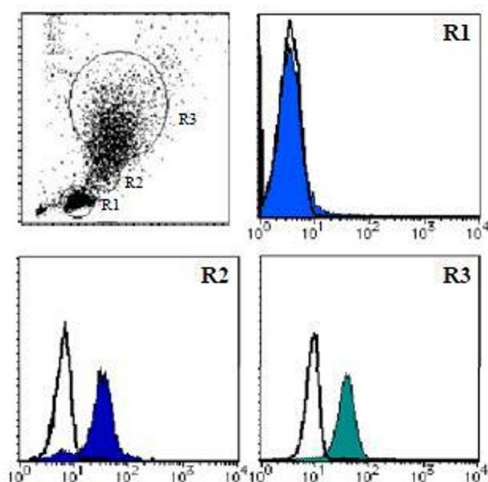
Preservative: Sodium azide

Precaution of Use: This product contains sodium azide: a POISONOUS AND HAZARDOUS SUBSTANCE which should be handled by trained staff only.

Storage: 4 °C

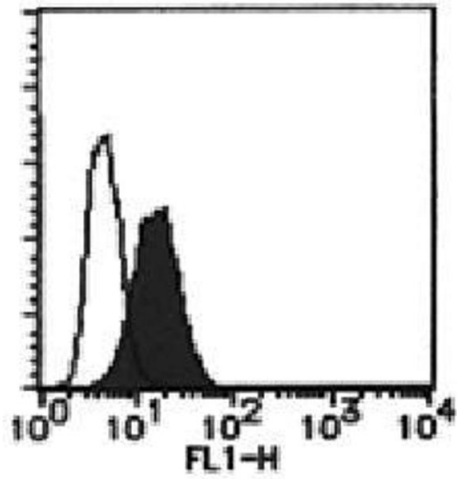
Storage Comment: Store in the dark at 2-8 °C.

Images



Flow Cytometry

Image 1.



Flow Cytometry

Image 2.