

Datasheet for ABIN2853603
anti-CD300a antibody (FITC)



[Go to Product page](#)

1 Image

Overview

Quantity:	100 µL
Target:	CD300a (CD300A)
Reactivity:	Mouse
Host:	Rat
Clonality:	Monoclonal
Conjugate:	This CD300a antibody is conjugated to FITC
Application:	Flow Cytometry (FACS)

Product Details

Immunogen:	Mouse MAIR-I transfected Ba/F3 cells
Clone:	TX40
Isotype:	IgG2a
Specificity:	This antibody reacts with mouse CD300a antigen.
Purification:	Mouse MAIR-I transfected Ba/F3 cells

Target Details

Target:	CD300a (CD300A)
Alternative Name:	CD300A / CMRF35H (CD300A Products)
Background:	Immune responses are regulated by opposing positive and negative signals triggered by the interaction of activating and inhibitory cell surface receptors with their ligands. Shibuya et al.

Target Details

identified novel paired activated and inhibitory immunoglobulin-like receptors, designated myeloid-associated immunoglobulin-like receptor (MAIR) I and MAIR-II, whose extracellular domains are highly conserved by each other. MAIR-I, expressed on the majority of myeloid cells, including macrophages, granulocytes, mast cells, and dendritic cells, contains the tyrosine-based sorting motif and the immunoreceptor tyrosine-based inhibitory motif-like sequences in the cytoplasmic domains. On the other hand, MAIR-II, expressed on subsets of peritoneal macrophages and B cells, associates with the immunoreceptor tyrosine-based activation motif-bearing adaptor DAP12. MAIR-I is also known as CD300a/ CMRF-35-like Ig-like molecule-8 (CLM-8)/leukocyte mono-Ig-like receptor 1 (LMIR1). MAIR-II is also known as CD300d/LMIR2/CLM-4/dendritic cell-derived Ig-like receptor 1 (DIgR1).Synonyms: CD300 antigen-like family member A, CLM-8, CMRF-35-H9, CMRF35-H, CMRF35-H9, CMRF35-like molecule 8, IRC1/IRC2, IRp60, Inhibitory receptor protein 60, NK inhibitory receptor

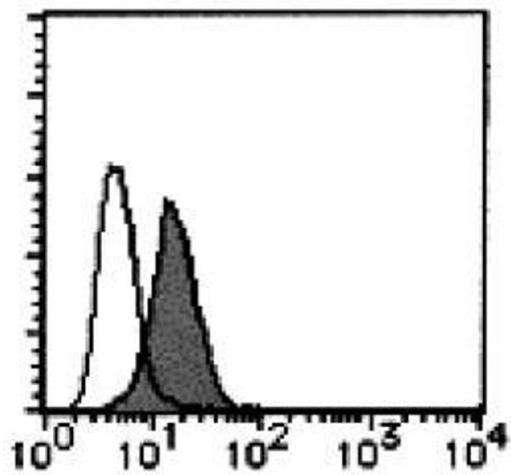
Gene ID:	217303
NCBI Accession:	NP_739564
UniProt:	Q6SJQ0
Pathways:	Regulation of Leukocyte Mediated Immunity , Positive Regulation of Immune Effector Process

Application Details

Application Notes:	Optimal working dilution should be determined by the investigator.
Restrictions:	For Research Use only

Handling

Concentration:	0.5 mg/mL
Buffer:	PBS, 0.09 % NaN ₃ , 1 % BSA
Preservative:	Sodium azide
Precaution of Use:	This product contains sodium azide: a POISONOUS AND HAZARDOUS SUBSTANCE which should be handled by trained staff only.
Storage:	4 °C
Storage Comment:	Store at 2-8 °C.



Flow Cytometry

Image 1.