

Datasheet for ABIN2853610  
**anti-CD52 antibody (PE)**



[Go to Product page](#)

1 Image

## Overview

Quantity:	50 tests
Target:	CD52
Reactivity:	Mouse
Host:	Rat
Clonality:	Monoclonal
Conjugate:	This CD52 antibody is conjugated to PE
Application:	Flow Cytometry (FACS)

## Product Details

Immunogen:	IL-2Ralpha-transgenic mouse splenocyte
Clone:	BTG-2G
Isotype:	IgG2a
Specificity:	This antibody reacts with mouse CD52 antigen.
Purification:	Protein G agarose

## Target Details

Target:	CD52
Alternative Name:	CD52 / CAMPATH-1 ( <a href="#">CD52 Products</a> )
Background:	CAMPATH-1, also known as CD52, is a heavily glycosylated, GPI-anchored protein expressed at high levels on almost all thymocytes, lymphocytes, monocytes, and macrophages. CAMPATH-1

## Target Details

is an exceptionally good target for complement-mediated cell lysis and antibody-mediated cellular cytotoxicity. Humanized CAMPATH-1 antibodies have been used therapeutically to effectively deplete lymphocytes in allogeneic bone marrow transplants, hematologic malignancies, and autoimmune diseases. Clinical trials suggest CAMPATH-1 antibodies are especially promising in the treatment of leukemia, non-Hodgkin lymphomas, and rheumatoid arthritis. The apparent size of CAMPATH-1 by SDS-PAGE is 25-29 kDa, however, the actual molecule is much smaller, ~ 8-9 kDa as confirmed by total structure analysis and mass spectrometry. Synonyms: CDw52, Cambridge pathology 1 antigen, Epididymal secretory protein E5, HE5

Gene ID: 23833

NCBI Accession: [NP\\_038734](#)

UniProt: [Q64389](#)

## Application Details

Application Notes: Optimal working dilution should be determined by the investigator.

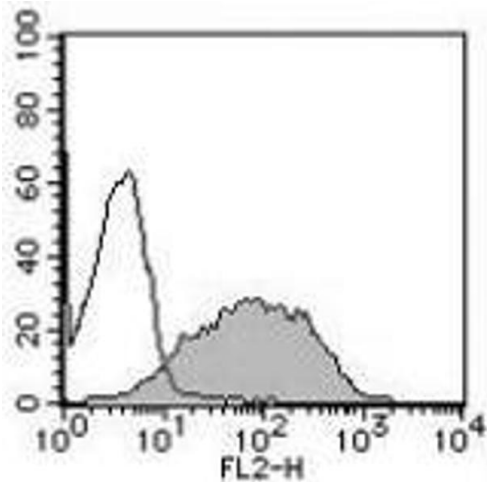
Restrictions: For Research Use only

## Handling

Buffer: 50 tests in 1 mL volume of PBS containing 1 % BSA and 0.09 % NaN<sub>3</sub>

Storage: 4 °C

Storage Comment: Store at 2-8 °C.



Flow Cytometry

Image 1.