

Datasheet for ABIN2853628

**anti-NR4A3 antibody (Middle Region)**[Go to Product page](#)**2** Images

## Overview

Quantity:	0.4 mL
Target:	NR4A3
Binding Specificity:	Middle Region
Reactivity:	Human, Mouse
Host:	Rabbit
Clonality:	Polyclonal
Conjugate:	This NR4A3 antibody is un-conjugated
Application:	Western Blotting (WB), Immunohistochemistry (Paraffin-embedded Sections) (IHC (p)), Enzyme Immunoassay (EIA)

## Product Details

Immunogen:	This antibody is generated from rabbits immunized with a KLH conjugated synthetic peptide selected from the center region of human TEC.
Isotype:	Ig Fraction
Specificity:	This antibody reacts to TEC.
Purification:	Protein G column, eluted with high and low pH buffers and neutralized immediately, followed by dialysis against PBS

## Target Details

Target:	NR4A3
Alternative Name:	TEC ( <a href="#">NR4A3 Products</a> )

## Target Details

**Background:** TEC belongs to the TEC subfamily of non-receptor protein-tyrosine kinases containing a pleckstrin homology domain. TEC family kinases are involved in the intracellular signaling mechanisms of cytokine receptors, lymphocyte surface antigens, heterotrimeric G-protein coupled receptors, and integrin molecules. They are also key players in the regulation of the immune functions. TEC kinase is an integral component of T cell signaling and has a distinct role in T cell activation. TEC may be associated with myelodysplastic syndrome. Synonyms: PSCTK4, Tyrosine-protein kinase Tec

**Gene ID:** 7006, 5874

**UniProt:** [P42680](#)

**Pathways:** [Fc-epsilon Receptor Signaling Pathway](#), [Nuclear Receptor Transcription Pathway](#), [Steroid Hormone Mediated Signaling Pathway](#)

## Application Details

**Application Notes:** ELISA: 1/1,000. Western blotting: 1/100 - 1/500. Immunohistochemistry: 1/50 - 1/100.  
Other applications not tested.  
Optimal dilutions are dependent on conditions and should be determined by the user.

**Restrictions:** For Research Use only

## Handling

**Concentration:** 0.25 mg/mL

**Buffer:** PBS with 0.09 % (W/V) sodium azide

**Preservative:** Sodium azide

**Precaution of Use:** This product contains sodium azide: a POISONOUS AND HAZARDOUS SUBSTANCE which should be handled by trained staff only.

**Handling Advice:** Avoid repeated freezing and thawing.

**Storage:** 4 °C/-20 °C

**Storage Comment:** Store the antibody undiluted at 2-8 °C for one month or (in aliquots) at -20 °C for longer.

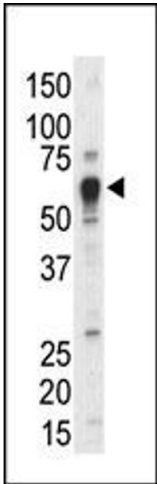


Image 1.

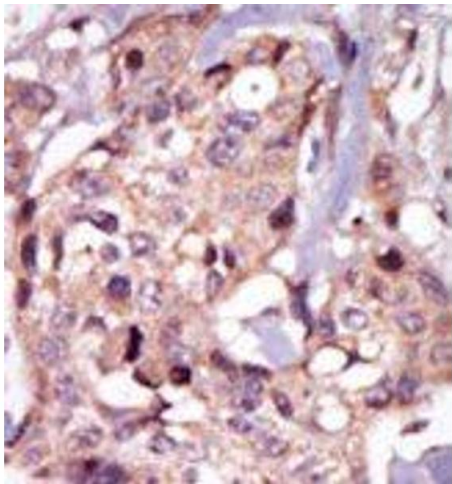


Image 2.