

Datasheet for ABIN2853629
anti-PLAU antibody (N-Term)



[Go to Product page](#)

2 Images

Overview

Quantity:	0.4 mL
Target:	PLAU
Binding Specificity:	AA 68-98, N-Term
Reactivity:	Human, Mouse
Host:	Rabbit
Clonality:	Polyclonal
Application:	Western Blotting (WB), ELISA, Immunohistochemistry (Paraffin-embedded Sections) (IHC (p))

Product Details

Immunogen:	This antibody is generated from rabbits immunized with a KLH conjugated synthetic peptide between aa 68-98 from the N-terminal region of human PLAU.
Specificity:	This antibody recognizes Urokinase/PLAU (N-term).
Purification:	Protein G Chromatography, eluted with high and low pH buffers and neutralized immediately, followed by dialysis against PBS

Target Details

Target:	PLAU
Alternative Name:	uPA / PLAU (PLAU Products)
Background:	PLAU, a member of the peptidase family S1, is a potent plasminogen activator and is clinically used for therapy of thrombolytic disorders. PLAU specifically cleaves the Arg-I-Val bond in plasminogen to form plasmin. The protein is found in high and low molecular mass forms.

Target Details

Each consists of two chains, A and B. The high molecular mass form contains a long chain A. Cleavage occurs after residue 155 in the low molecular mass form to yield a short A1 chain. The protein is used in Pulmonary Embolism (PE) to initiate fibrinolysis. Structurally, PLAU contains 1 EGF-like domain and 1 kringle domain.

Alternate names: U-plasminogen activator, Urokinase, Urokinase-type plasminogen activator, Urokinase-type plasminogen activator chain B, Urokinase-type plasminogen activator long chain A, Urokinase-type plasminogen activator short chain A

Gene ID: 5328, 9606

UniProt: [P00749](#)

Pathways: [Cellular Response to Molecule of Bacterial Origin](#), [Carbohydrate Homeostasis](#), [Autophagy](#), [Smooth Muscle Cell Migration](#)

Application Details

Application Notes: ELISA: 1/1,000. Western blotting: 1/100-1/500. Immunohistochemistry: 1/50-1/100. Other applications not tested. Optimal dilutions are dependent on conditions and should be determined by the user.

Restrictions: For Research Use only

Handling

Format: Liquid

Concentration: 0.25 mg/mL

Buffer: PBS with 0.09% (w/v) Sodium Azide as preservative.

Preservative: Sodium azide

Precaution of Use: This product contains sodium azide: a POISONOUS AND HAZARDOUS SUBSTANCE which should be handled by trained staff only.

Handling Advice: Avoid repeated freezing and thawing.

Storage: 4 °C/-20 °C

Storage Comment: Store the antibody undiluted at 2-8°C for one month or (in aliquots) at -20°C for longer.

Expiry Date: 12 months

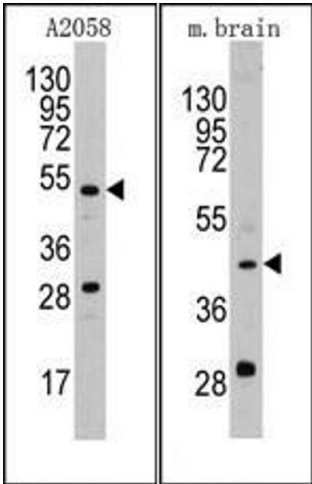


Image 1.

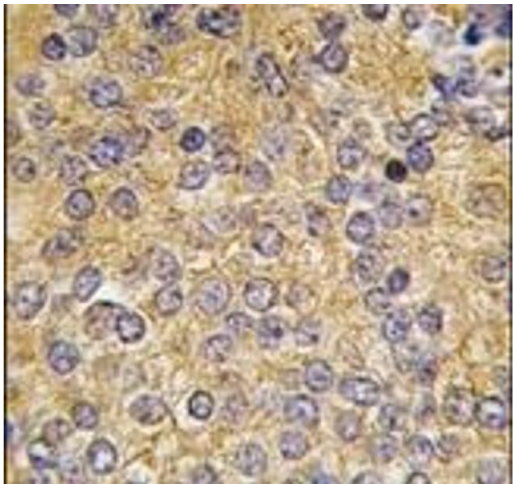


Image 2.