

## Datasheet for ABIN285409 **anti-c-Rel antibody (C-Term)**



[Go to Product page](#)

### 1 Image

#### Overview

Quantity:	100 µL
Target:	c-Rel
Binding Specificity:	C-Term
Reactivity:	Human
Host:	Rabbit
Clonality:	Polyclonal
Conjugate:	This c-Rel antibody is un-conjugated
Application:	Western Blotting (WB), ELISA

#### Product Details

Immunogen:	NFKB C-rel antibody was raised in rabbit using NFKB cRel peptide corresponding to a region near the C-terminus of the human protein conjugated to KLH as the immunogen.
Purification:	NFKB C-rel antibody was purified by delipidation and defibrination.

#### Target Details

Target:	c-Rel
Alternative Name:	NFKB C-Rel ( <a href="#">c-Rel Products</a> )

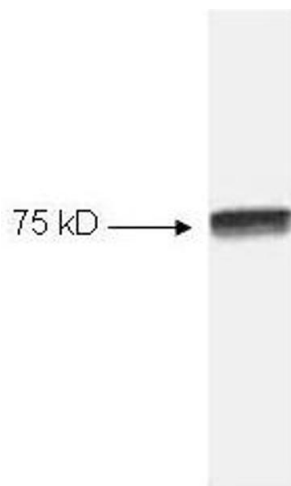
#### Application Details

Application Notes:	ELISA: 1:5,000-1:25,000, WB: 1:500-1:3,000
Restrictions:	For Research Use only

## Handling

Format:	Liquid
Concentration:	Lot specific
Buffer:	0.02M K <sub>3</sub> PO <sub>4</sub> , pH 7.2, with 0.15M NaCl, and 0.01 % NaN <sub>3</sub> .
Preservative:	Sodium azide
Precaution of Use:	This product contains sodium azide as preservative. Although the amount of sodium azide is very small appropriate care must be taken when handling this product.
Handling Advice:	Avoid repeated freeze/thaw cycles
Storage:	-20 °C
Storage Comment:	Store at -20 °C. Aliquot and freeze at -20 °C or below for long term storage.

## Images



### Western Blotting

**Image 1.** Western blot of HeLa cell extract. All incubations except color development were performed using TBS supplemented with 0.1% Tween-20 at room temperature. The membrane was blocked in 5% dry milk for 2 h. After washing, a 1:1,000 dilution of the primary antibody was added to the membrane and incubated for 2 h. Washes with buffer were performed 4 times for 5 mins each. The western blot was incubated with Goat anti-Rabbit IgG (H + L) (HRP) diluted 1:2,000 for 1 h. Washes with TBS preceded color development.