

Datasheet for ABIN2854265
anti-Annexin A11 antibody (N-Term)[Go to Product page](#)

1 Image

Overview

Quantity:	100 µL
Target:	Annexin A11 (ANXA11)
Binding Specificity:	N-Term
Reactivity:	Human
Host:	Rabbit
Clonality:	Polyclonal
Conjugate:	This Annexin A11 antibody is un-conjugated
Application:	Western Blotting (WB)

Product Details

Immunogen:	Carrier-protein conjugated synthetic peptide encompassing a sequence within the N-terminus region of human Annexin XI. The exact sequence is proprietary.
Isotype:	IgG
Cross-Reactivity:	Human
Characteristics:	Rabbit Polyclonal antibody to Annexin XI (annexin A11) Annexin XI antibody
Purification:	Affinity purified by Protein A.

Target Details

Target:	Annexin A11 (ANXA11)
---------	----------------------

Target Details

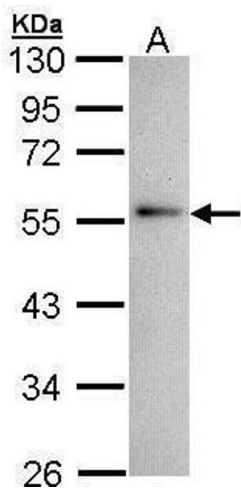
Alternative Name:	annexin A11 (ANXA11 Products)
Background:	<p>This gene encodes a member of the annexin family, a group of calcium-dependent phospholipid-binding proteins. Annexins have unique N-terminal domains and conserved C-terminal domains, which contain the calcium-dependent phospholipid-binding sites. The encoded protein is a 56-kD antigen recognized by sera from patients with various autoimmune diseases. Transcript variants encoding the same isoform have been identified.</p> <p>Cellular Localization: Cytoplasm , Nucleus , Melanosome</p>
Molecular Weight:	54 kDa
Gene ID:	311
UniProt:	P50995

Application Details

Application Notes:	WB: 1:500-1:3000. Optimal dilutions/concentrations should be determined by the researcher. Not tested in other applications.
Comment:	Positive Control: A431
Restrictions:	For Research Use only

Handling

Format:	Liquid
Concentration:	1 mg/mL
Buffer:	1XPBS (pH 7), 20 % Glycerol, 0.01 % Thimerosal
Preservative:	Thimerosal (Merthiolate)
Precaution of Use:	This product contains Thimerosal (Merthiolate): a POISONOUS AND HAZARDOUS SUBSTANCE which should be handled by trained staff only.
Storage:	4 °C,-20 °C
Storage Comment:	Store as concentrated solution. Centrifuge briefly prior to opening vial. For short-term storage (1-2 weeks), store at 4°C. For long-term storage, aliquot and store at -20°C or below. Avoid multiple freeze-thaw cycles.



Western Blotting

Image 1. WB Image Sample (30 ug of whole cell lysate) A:
A431 , 10% SDS PAGE antibody diluted at 1:1000