

Datasheet for ABIN2854266
anti-ARL2 antibody (C-Term)[Go to Product page](#)

1 Image

Overview

Quantity:	100 µL
Target:	ARL2
Binding Specificity:	C-Term
Reactivity:	Human
Host:	Rabbit
Clonality:	Polyclonal
Conjugate:	This ARL2 antibody is un-conjugated
Application:	Western Blotting (WB)

Product Details

Immunogen:	Carrier-protein conjugated synthetic peptide encompassing a sequence within the C-terminus region of human ARL2. The exact sequence is proprietary.
Isotype:	IgG
Cross-Reactivity:	Mouse (Murine), Rat (Rattus), Xenopus laevis, Xenopus tropicalis, Sheep (Ovine), Cow (Bovine)
Cross-Reactivity (Details):	Mouse (92 %), Rat (92 %), Xenopus laevis (100 %), Xenopus Tropicalis (100 %), Sheep (83 %), Bovine (92 %)
Characteristics:	Rabbit polyclonal antibody to ARL2 (ADP-ribosylation factor-like 2) ARL2 antibody
Purification:	Purified by antigen-affinity chromatography.

Target Details

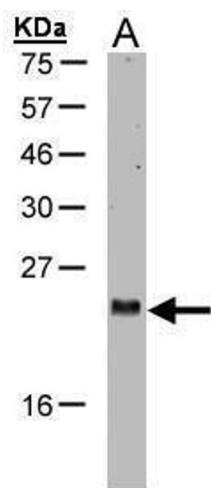
Target:	ARL2
Alternative Name:	ARL2 (ARL2 Products)
Background:	<p>This gene encodes a small GTP-binding protein of the RAS superfamily which functions as an ADP-ribosylation factor (ARF). The encoded protein is one of a functionally distinct group of ARF-like genes.</p> <p>Cellular Localization: Centrosome</p>
Molecular Weight:	21 kDa
Gene ID:	402
Pathways:	Cell-Cell Junction Organization , Maintenance of Protein Location

Application Details

Application Notes:	<p>Suggested dilution Reference Western blot 1:500-1:3000* Not tested in other applications.</p> <p>*Optimal dilutions/concentrations should be determined by the researcher.Suggested dilutionReferenceWestern blot1:500-1:3000*</p>
Comment:	Positive Control: H1299
Restrictions:	For Research Use only

Handling

Format:	Liquid
Concentration:	1 mg/mL
Buffer:	1XPBS, 1 % BSA, 20 % Glycerol (pH 7). 0.01 % Thimerosal was added as a preservative.
Preservative:	Thimerosal (Merthiolate)
Precaution of Use:	This product contains Thimerosal (Merthiolate): a POISONOUS AND HAZARDOUS SUBSTANCE which should be handled by trained staff only.
Storage:	-20 °C
Storage Comment:	Keep as concentrated solution. Aliquot and store at -20°C or below. Avoid multiple freeze-thaw cycles.



Western Blotting

Image 1. WB Image Sample(30 µg of whole cell lysate)
A:H1299 15% SDS PAGE antibody diluted at 1:1000