



[Go to Product page](#)

Datasheet for ABIN2854267
anti-SUCNR1 antibody

1 Image

Overview

Quantity:	100 µL
Target:	SUCNR1
Reactivity:	Human
Host:	Rabbit
Clonality:	Polyclonal
Conjugate:	This SUCNR1 antibody is un-conjugated
Application:	Western Blotting (WB)

Product Details

Immunogen:	Carrier-protein conjugated synthetic peptide encompassing a sequence within the center region of human GPR91. The exact sequence is proprietary.
Isotype:	IgG
Cross-Reactivity:	Human, Mouse
Characteristics:	Rabbit polyclonal antibody to GPR91 (succinate receptor 1) GPR91 antibody [N2N3]
Purification:	Affinity purified by Protein A.

Target Details

Target:	SUCNR1
Alternative Name:	succinate receptor 1 (SUCNR1 Products)

Target Details

Background: This gene encodes a G-protein-coupled receptor for succinate, an intermediate molecule of the citric acid cycle. It is involved in the promotion of hematopoietic progenitor cell development, and it has a potential role in renovascular hypertension which has known correlations to renal failure, diabetes and atherosclerosis.

Cellular Localization: Cell membrane, Multi-pass membrane protein

Molecular Weight: 39 kDa

Gene ID: 56670

UniProt: [Q9BXA5](#)

Application Details

Application Notes: WB: 1:500-1:3000. Optimal dilutions/concentrations should be determined by the researcher.
Not tested in other applications.

Comment: Validation: Orthogonal

Restrictions: For Research Use only

Handling

Format: Liquid

Concentration: 1.00 mg/mL

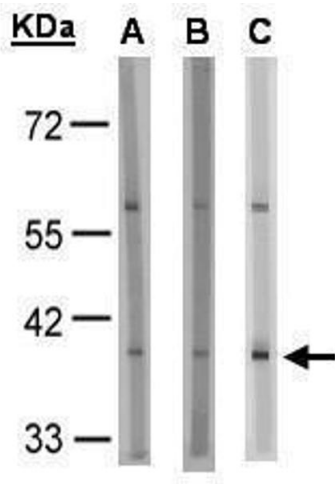
Buffer: 1XPBS (pH 7), 20 % Glycerol, 0.01 % Thimerosal

Preservative: Thimerosal (Merthiolate)

Precaution of Use: This product contains Thimerosal (Merthiolate): a POISONOUS AND HAZARDOUS SUBSTANCE which should be handled by trained staff only.

Storage: 4 °C,-20 °C

Storage Comment: Store as concentrated solution. Centrifuge briefly prior to opening vial. For short-term storage (1-2 weeks), store at 4°C. For long-term storage, aliquot and store at -20°C or below. Avoid multiple freeze-thaw cycles.



Western Blotting

Image 1. WB Image Sample(30 μ g of whole cell lysate)
A:HeLa S3 , B:MOLT4, C:Raji , 10% SDS PAGE antibody diluted at 1:1000