

Datasheet for ABIN2854268

anti-OPN5 antibody**1** Image[Go to Product page](#)

Overview

Quantity:	100 µL
Target:	OPN5
Reactivity:	Human
Host:	Rabbit
Clonality:	Polyclonal
Conjugate:	This OPN5 antibody is un-conjugated
Application:	Western Blotting (WB), Immunohistochemistry (Frozen Sections) (IHC (fro))

Product Details

Immunogen:	Carrier-protein conjugated synthetic peptide encompassing a sequence within the center region of human Opsin 5. The exact sequence is proprietary.
Isotype:	IgG
Cross-Reactivity:	Human, Mouse
Characteristics:	Rabbit polyclonal antibody to neuropsin (opsin 5) neuropsin antibody [N2C1], Internal
Purification:	Purified by antigen-affinity chromatography.

Target Details

Target:	OPN5
Alternative Name:	opsin 5 (OPN5 Products)

Target Details

Background: Opsins are members of the guanine nucleotide-binding protein (G protein)-coupled receptor superfamily. This opsin gene is expressed in the eye, brain, testes, and spinal cord. This gene belongs to the seven-exon subfamily of mammalian opsin genes that includes peropsin (RRH) and retinal G protein coupled receptor (RGR). Like these other seven-exon opsin genes, this gene may encode a protein with photoisomerase activity. Alternative splicing results in multiple transcript variants encoding different isoforms.

Cellular Localization: Membrane, Multi-pass membrane protein

Molecular Weight: 40 kDa

Gene ID: 221391

UniProt: [Q6U736](#)

Application Details

Application Notes: WB: 1:500-1:3000. IHC-Fr: 1:100-1:1000. Optimal dilutions/concentrations should be determined by the researcher. Not tested in other applications.

Comment: Positive Control: HeLaS3

Restrictions: For Research Use only

Handling

Format: Liquid

Concentration: 1 mg/mL

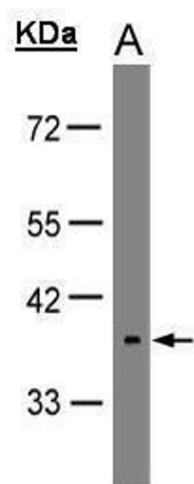
Buffer: 1XPBS (pH 7), 20 % Glycerol, 0.01 % Thimerosal

Preservative: Thimerosal (Merthiolate)

Precaution of Use: This product contains Thimerosal (Merthiolate): a POISONOUS AND HAZARDOUS SUBSTANCE which should be handled by trained staff only.

Storage: 4 °C,-20 °C

Storage Comment: Store as concentrated solution. Centrifuge briefly prior to opening vial. For short-term storage (1-2 weeks), store at 4°C. For long-term storage, aliquot and store at -20°C or below. Avoid multiple freeze-thaw cycles.



Western Blotting

Image 1. WB Image Sample(30 µg of whole cell lysate)
A:HeLa S3 , 10% SDS PAGE antibody diluted at 1:1000