



Datasheet for ABIN2854276
anti-GPR146 antibody



[Go to Product page](#)

1 Image

Overview

Quantity:	100 µL
Target:	GPR146
Reactivity:	Human
Host:	Rabbit
Clonality:	Polyclonal
Conjugate:	This GPR146 antibody is un-conjugated
Application:	Western Blotting (WB)

Product Details

Immunogen:	Carrier-protein conjugated synthetic peptide encompassing a sequence within the center region of human GPR146. The exact sequence is proprietary.
Isotype:	IgG
Cross-Reactivity:	Human
Characteristics:	Rabbit polyclonal antibody to GPR146 (G protein-coupled receptor 146) GPR146 antibody [C1C2], Internal
Purification:	Purified by antigen-affinity chromatography.

Target Details

Target:	GPR146
Alternative Name:	G protein-coupled receptor 146 (GPR146 Products)

Target Details

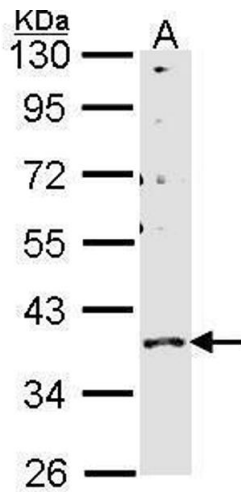
Background:	Orphan receptor. Cellular Localization: Cell membrane, Multi-pass membrane protein
Molecular Weight:	37 kDa
Gene ID:	115330
UniProt:	Q96CH1

Application Details

Application Notes:	WB: 1:500-1:3000. Optimal dilutions/concentrations should be determined by the researcher. Not tested in other applications.
Restrictions:	For Research Use only

Handling

Format:	Liquid
Concentration:	1 mg/mL
Buffer:	1XPBS (pH 7), 50 % Glycerol, 0.01 % Thimerosal
Preservative:	Thimerosal (Merthiolate)
Precaution of Use:	This product contains Thimerosal (Merthiolate): a POISONOUS AND HAZARDOUS SUBSTANCE which should be handled by trained staff only.
Storage:	4 °C,-20 °C
Storage Comment:	Store as concentrated solution. Centrifuge briefly prior to opening vial. For short-term storage (1-2 weeks), store at 4°C. For long-term storage, aliquot and store at -20°C or below. Avoid multiple freeze-thaw cycles.



Western Blotting

Image 1. WB Image Sample (30 ug of whole cell lysate) A:
H1299 10% SDS PAGE GPR146 antibody antibody diluted
at 1:1000