

Datasheet for ABIN2854277
anti-GPR20 antibody (C-Term)[Go to Product page](#)

1 Image

Overview

| | |
|----------------------|--------------------------------------|
| Quantity: | 100 µL |
| Target: | GPR20 |
| Binding Specificity: | C-Term |
| Reactivity: | Human |
| Host: | Rabbit |
| Clonality: | Polyclonal |
| Conjugate: | This GPR20 antibody is un-conjugated |
| Application: | Western Blotting (WB) |

Product Details

| | |
|-------------------|--|
| Immunogen: | Carrier-protein conjugated synthetic peptide encompassing a sequence within the C-terminus region of human GPR20. The exact sequence is proprietary. |
| Isotype: | IgG |
| Cross-Reactivity: | Human |
| Characteristics: | Rabbit polyclonal antibody to GPR20 (G protein-coupled receptor 20) GPR20 antibody [C2C3], C-term |
| Purification: | Purified by antigen-affinity chromatography. |

Target Details

| | |
|---------|-------|
| Target: | GPR20 |
|---------|-------|

Target Details

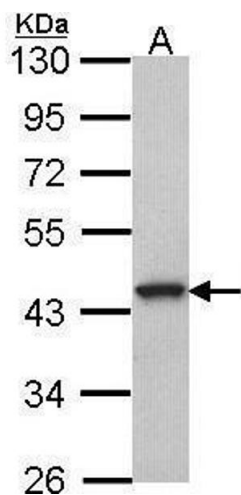
| | |
|-------------------|--|
| Alternative Name: | G protein-coupled receptor 20 (GPR20 Products) |
| Background: | Orphan receptor with constitutive G(i) signaling activity that activate cyclic AMP. Cellular Localization: Cell membrane, Multi-pass membrane protein |
| Molecular Weight: | 39 kDa |
| Gene ID: | 2843 |
| UniProt: | Q99678 |

Application Details

| | |
|--------------------|---|
| Application Notes: | WB: 1:500-1:3000. Optimal dilutions/concentrations should be determined by the researcher. Not tested in other applications. |
| Comment: | Positive Control: A549 |
| Restrictions: | For Research Use only |

Handling

| | |
|--------------------|--|
| Format: | Liquid |
| Concentration: | 1 mg/mL |
| Buffer: | 1XPBS (pH 7), 50 % Glycerol, 0.01 % Thimerosal |
| Preservative: | Thimerosal (Merthiolate) |
| Precaution of Use: | This product contains Thimerosal (Merthiolate): a POISONOUS AND HAZARDOUS SUBSTANCE which should be handled by trained staff only. |
| Storage: | 4 °C, -20 °C |
| Storage Comment: | Store as concentrated solution. Centrifuge briefly prior to opening vial. For short-term storage (1-2 weeks), store at 4°C. For long-term storage, aliquot and store at -20°C or below. Avoid multiple freeze-thaw cycles. |



Western Blotting

Image 1. WB Image Sample (30 ug of whole cell lysate) A:
A549 10% SDS PAGE antibody diluted at 1:1000