

Datasheet for ABIN2854278

**anti-GPR45 antibody**[Go to Product page](#)**1** Image

## Overview

Quantity:	100 µL
Target:	GPR45
Reactivity:	Human
Host:	Rabbit
Clonality:	Polyclonal
Conjugate:	This GPR45 antibody is un-conjugated
Application:	Western Blotting (WB)

## Product Details

Immunogen:	Carrier-protein conjugated synthetic peptide encompassing a sequence within the center region of human GPR45. The exact sequence is proprietary.
Isotype:	IgG
Cross-Reactivity:	Human
Characteristics:	Rabbit polyclonal antibody to G protein-coupled receptor 45 (G protein-coupled receptor 45) GPR45 antibody
Purification:	Purified by antigen-affinity chromatography.

## Target Details

Target:	GPR45
Alternative Name:	G protein-coupled receptor 45 ( <a href="#">GPR45 Products</a> )

## Target Details

**Background:** This intronless gene encodes a member of the G protein-coupled receptor (GPCR) family. Members of this protein family contain seven putative transmembrane domains and may mediate signaling processes to the interior of the cell via activation of heterotrimeric G proteins. This protein may function in the central nervous system.

Cellular Localization: Cell membrane, Multi-pass membrane protein

**Molecular Weight:** 42 kDa

**Gene ID:** 11250

**UniProt:** [Q9Y5Y3](#)

## Application Details

**Application Notes:** WB: 1:500-1:3000. Optimal dilutions/concentrations should be determined by the researcher. Not tested in other applications.

**Comment:** Positive Control: NT2D1

**Restrictions:** For Research Use only

## Handling

**Format:** Liquid

**Concentration:** 1 mg/mL

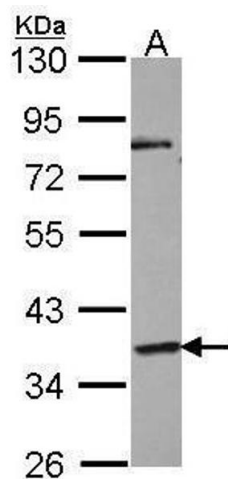
**Buffer:** 1XPBS ( pH 7), 50 % Glycerol, 0.01 % Thimerosal

**Preservative:** Thimerosal (Merthiolate)

**Precaution of Use:** This product contains Thimerosal (Merthiolate): a POISONOUS AND HAZARDOUS SUBSTANCE which should be handled by trained staff only.

**Storage:** 4 °C,-20 °C

**Storage Comment:** Store as concentrated solution. Centrifuge briefly prior to opening vial. For short-term storage (1-2 weeks), store at 4°C. For long-term storage, aliquot and store at -20°C or below. Avoid multiple freeze-thaw cycles.



Western Blotting

**Image 1.** WB Image Sample (30 ug of whole cell lysate) A:  
NT2D1 10% SDS PAGE antibody diluted at 1:1000