



[Go to Product page](#)

Datasheet for ABIN2854285
anti-CTAG1B antibody

1 Image

Overview

Quantity:	100 µL
Target:	CTAG1B
Reactivity:	Human
Host:	Rabbit
Clonality:	Polyclonal
Conjugate:	This CTAG1B antibody is un-conjugated
Application:	Western Blotting (WB)

Product Details

Immunogen:	Recombinant protein encompassing a sequence within the center region of human CTAG1B. The exact sequence is proprietary.
Isotype:	IgG
Cross-Reactivity:	Human
Characteristics:	Rabbit Polyclonal antibody to CTAG1B (cancer/testis antigen 1B) CTAG1B antibody
Purification:	Purified by antigen-affinity chromatography.

Target Details

Target:	CTAG1B
Alternative Name:	cancer/testis antigen 1B (CTAG1B Products)

Target Details

Background: Cancer/testis antigens, such as CTAG1B, are expressed in a variety of malignant tumors but solely in testis among normal adult tissues (Yoshida et al., 2006 [PubMed 16596224]). [supplied by OMIM]

Cellular Localization: Cytoplasm

Molecular Weight: 18 kDa

Gene ID: 1485

UniProt: [P78358](#)

Application Details

Application Notes: WB: 1:500-1:3000. Optimal dilutions/concentrations should be determined by the researcher. Not tested in other applications.

Comment: Positive Control: A375

Restrictions: For Research Use only

Handling

Format: Liquid

Concentration: 1 mg/mL

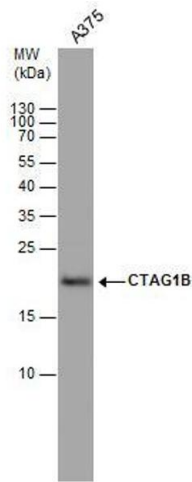
Buffer: 1XPBS (pH 7), 20 % Glycerol, 0.01 % Thimerosal

Preservative: Thimerosal (Merthiolate)

Precaution of Use: This product contains Thimerosal (Merthiolate): a POISONOUS AND HAZARDOUS SUBSTANCE which should be handled by trained staff only.

Storage: 4 °C, -20 °C

Storage Comment: Store as concentrated solution. Centrifuge briefly prior to opening vial. For short-term storage (1-2 weeks), store at 4°C. For long-term storage, aliquot and store at -20°C or below. Avoid multiple freeze-thaw cycles.



Western Blotting

Image 1. WB Image CTAG1B antibody detects CTAG1B protein by western blot analysis. Whole cell extracts (30 μ g) was separated by 15% SDS-PAGE, and the membrane was blotted with CTAG1B antibody , diluted by 1:1000.