

Datasheet for ABIN2854295

anti-Polybromo 1 antibody (N-Term)**2** Images[Go to Product page](#)

Overview

| | |
|----------------------|--|
| Quantity: | 100 µL |
| Target: | Polybromo 1 (PBRM1) |
| Binding Specificity: | N-Term |
| Reactivity: | Human |
| Host: | Rabbit |
| Clonality: | Polyclonal |
| Conjugate: | This Polybromo 1 antibody is un-conjugated |
| Application: | Western Blotting (WB), Immunocytochemistry (ICC), Immunohistochemistry (Paraffin-embedded Sections) (IHC (p)), Immunofluorescence (IF) |

Product Details

| | |
|-------------------|--|
| Immunogen: | Recombinant protein encompassing a sequence within the N-terminus region of human PB1. The exact sequence is proprietary. |
| Isotype: | IgG |
| Cross-Reactivity: | Human, Mouse |
| Characteristics: | Rabbit Polyclonal antibody to PB1 (polybromo 1) PB1 antibody [N1N2], N-term |
| Purification: | Purified by antigen-affinity chromatography. |

Target Details

| | |
|---------|---------------------|
| Target: | Polybromo 1 (PBRM1) |
|---------|---------------------|

Target Details

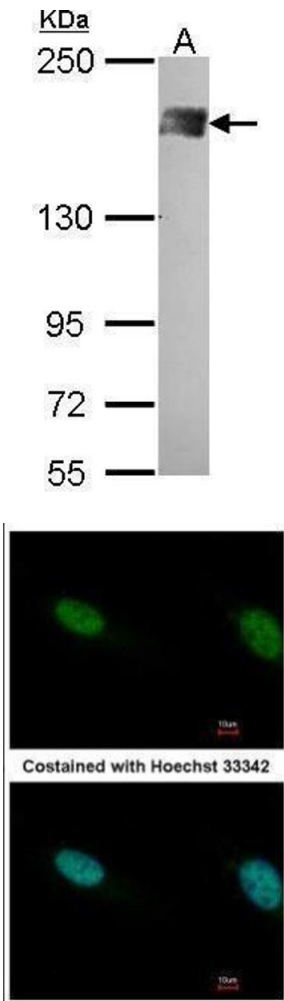
| | |
|-------------------|--|
| Alternative Name: | polybromo 1 (PBRM1 Products) |
| Background: | Involved in transcriptional activation and repression of select genes by chromatin remodeling (alteration of DNA-nucleosome topology). |
| | Cellular Localization: Nucleus |
| Molecular Weight: | 193 kDa |
| Gene ID: | 55193 |
| UniProt: | Q86U86 |

Application Details

| | |
|--------------------|---|
| Application Notes: | WB: 1:500-1:3000. ICC/IF: 1:100-1:1000. IHC-P: 1:100-1:1000. Optimal dilutions/concentrations should be determined by the researcher. Not tested in other applications. |
| Comment: | Positive Control: A431 |
| Restrictions: | For Research Use only |

Handling

| | |
|--------------------|--|
| Format: | Liquid |
| Concentration: | 1 mg/mL |
| Buffer: | 1XPBS (pH 7), 20 % Glycerol, 0.01 % Thimerosal |
| Preservative: | Thimerosal (Merthiolate) |
| Precaution of Use: | This product contains Thimerosal (Merthiolate): a POISONOUS AND HAZARDOUS SUBSTANCE which should be handled by trained staff only. |
| Storage: | 4 °C,-20 °C |
| Storage Comment: | Store as concentrated solution. Centrifuge briefly prior to opening vial. For short-term storage (1-2 weeks), store at 4°C. For long-term storage, aliquot and store at -20°C or below. Avoid multiple freeze-thaw cycles. |



Western Blotting

Image 1. WB Image Sample (30 ug of whole cell lysate) A: A431 , 5% SDS PAGE PB1 antibody antibody diluted at 1:500

Immunofluorescence

Image 2. ICC/IF Image Immunofluorescence analysis of paraformaldehyde-fixed HeLa, using PB1, antibody at 1:500 dilution.