

Datasheet for ABIN2854296

**anti-HMMR antibody**[Go to Product page](#)**1** Image

## Overview

Quantity:	100 µL
Target:	HMMR
Reactivity:	Human
Host:	Rabbit
Clonality:	Polyclonal
Conjugate:	This HMMR antibody is un-conjugated
Application:	Western Blotting (WB)

## Product Details

Immunogen:	Recombinant protein encompassing a sequence within the center region of human CD168 / RHAMM. The exact sequence is proprietary.
Isotype:	IgG
Cross-Reactivity:	Human
Characteristics:	Rabbit Polyclonal antibody to RHAMM (hyaluronan-mediated motility receptor (RHAMM)) RHAMM antibody
Purification:	Purified by antigen-affinity chromatography.

## Target Details

Target:	HMMR
Alternative Name:	hyaluronan mediated motility receptor ( <a href="#">HMMR Products</a> )

## Target Details

**Background:** The protein encoded by this gene is involved in cell motility. It is expressed in breast tissue and together with other proteins, it forms a complex with BRCA1 and BRCA2, thus is potentially associated with higher risk of breast cancer. Alternatively spliced transcript variants encoding different isoforms have been noted for this gene.

**Molecular Weight:** 84 kDa

**Gene ID:** 3161

**UniProt:** [O75330](#)

**Pathways:** [Glycosaminoglycan Metabolic Process](#)

## Application Details

**Application Notes:** WB: 1:500-1:3000. Optimal dilutions/concentrations should be determined by the researcher.  
Not tested in other applications.

**Comment:** Positive Control: Human ESC

**Restrictions:** For Research Use only

## Handling

**Format:** Liquid

**Concentration:** 0.39 mg/mL

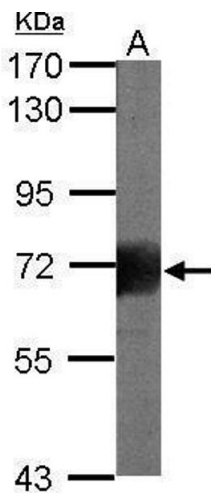
**Buffer:** 0.1M Tris-Glycine ( pH 7), 10 % Glycerol, 0.01 % Thimerosal

**Preservative:** Thimerosal (Merthiolate)

**Precaution of Use:** This product contains Thimerosal (Merthiolate): a POISONOUS AND HAZARDOUS SUBSTANCE which should be handled by trained staff only.

**Storage:** 4 °C, -20 °C

**Storage Comment:** Store as concentrated solution. Centrifuge briefly prior to opening vial. For short-term storage (1-2 weeks), store at 4°C. For long-term storage, aliquot and store at -20°C or below. Avoid multiple freeze-thaw cycles.



Western Blotting

**Image 1.** WB Image Sample (20 ug of whole cell lysate) A:  
human ESC 7.5% SDS PAGE antibody diluted at 1:1000