

Datasheet for ABIN2854321

**anti-Arylsulfatase E antibody (C-Term)**[Go to Product page](#)**1** Image

## Overview

Quantity:	100 µL
Target:	Arylsulfatase E (ARSE)
Binding Specificity:	C-Term
Reactivity:	Human
Host:	Rabbit
Clonality:	Polyclonal
Conjugate:	This Arylsulfatase E antibody is un-conjugated
Application:	Western Blotting (WB)

## Product Details

Immunogen:	Recombinant protein encompassing a sequence within the C-terminus region of human ARSE. The exact sequence is proprietary.
Isotype:	IgG
Cross-Reactivity:	Human
Characteristics:	Rabbit polyclonal antibody to ASE (arylsulfatase E (chondrodysplasia punctata 1)) ASE antibody [C2C3], C-term
Purification:	Purified by antigen-affinity chromatography.

## Target Details

Target:	Arylsulfatase E (ARSE)
---------	------------------------

## Target Details

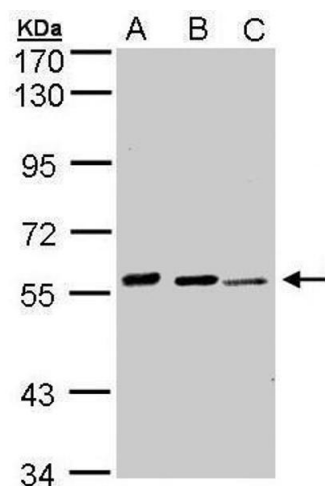
Alternative Name:	arylsulfatase E ( <a href="#">ARSE Products</a> )
Background:	<p>Arylsulfatase E is a member of the sulfatase family. It is glycosylated postranslationally and localized to the golgi apparatus. Sulfatases are essential for the correct composition of bone and cartilage matrix. X-linked chondrodysplasia punctata, a disease characterized by abnormalities in cartilage and bone development, has been linked to mutations in this gene.</p> <p>Cellular Localization: Golgi apparatus , Golgi stack</p>
Molecular Weight:	66 kDa
Gene ID:	415
UniProt:	<a href="#">P51690</a>

## Application Details

Application Notes:	WB: 1:500-1:3000. Optimal dilutions/concentrations should be determined by the researcher. Not tested in other applications.
Restrictions:	For Research Use only

## Handling

Format:	Liquid
Concentration:	1 mg/mL
Buffer:	0.1M Tris-Glycine ( pH 7), 10 % Glycerol, 0.01 % Thimerosal
Preservative:	Thimerosal (Merthiolate)
Precaution of Use:	This product contains Thimerosal (Merthiolate): a POISONOUS AND HAZARDOUS SUBSTANCE which should be handled by trained staff only.
Storage:	4 °C,-20 °C
Storage Comment:	Store as concentrated solution. Centrifuge briefly prior to opening vial. For short-term storage (1-2 weeks), store at 4°C. For long-term storage, aliquot and store at -20°C or below. Avoid multiple freeze-thaw cycles.



Western Blotting

**Image 1.** WB Image Sample(30 ug whole cell lysate)  
A:293T B:H1299 C:Hep G2 , 7.5% SDS PAGE antibody  
diluted at 1:1000