

Datasheet for ABIN2854325
anti-BLM antibody (N-Term)[Go to Product page](#)

2 Images

Overview

Quantity:	100 µL
Target:	BLM
Binding Specificity:	N-Term
Reactivity:	Human
Host:	Rabbit
Clonality:	Polyclonal
Conjugate:	This BLM antibody is un-conjugated
Application:	Western Blotting (WB), Immunofluorescence (IF), Immunocytochemistry (ICC)

Product Details

Immunogen:	Recombinant protein encompassing a sequence within the N-terminus region of human BLM. The exact sequence is proprietary.
Isotype:	IgG
Characteristics:	Rabbit Polyclonal antibody to BLM (Bloom syndrome, RecQ helicase-like) BLM antibody [N1N2], N-term
Purification:	Purified by antigen-affinity chromatography.

Target Details

Target:	BLM
Alternative Name:	BLM (BLM Products)

Target Details

Background: The Bloom syndrome gene product is related to the RecQ subset of DExH box-containing DNA helicases and has both DNA-stimulated ATPase and ATP-dependent DNA helicase activities. Mutations causing Bloom syndrome delete or alter helicase motifs and may disable the 3'-5' helicase activity. The normal protein may act to suppress inappropriate recombination.

Cellular Localization: Nucleus

Molecular Weight: 159 kDa

Gene ID: 641

Pathways: [DNA Damage Repair](#)

Application Details

Application Notes: Suggested dilution Reference ICC/IF 1:100-1:1000* Western blot 1:500-1:3000* Not tested in other applications. *Optimal dilutions/concentrations should be determined by the researcher.Suggested dilutionReferenceICC/IF1:100-1:1000* Western blot1:500-1:3000*

Comment: Positive Control: Jurkat , Raji , NCI-H929

Restrictions: For Research Use only

Handling

Format: Liquid

Concentration: 0.93 mg/mL

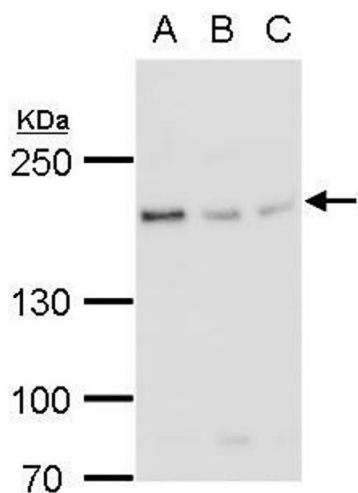
Buffer: 1XPBS, 20 % Glycerol (pH 7). 0.01 % Thimerosal was added as a preservative.

Preservative: Thimerosal (Merthiolate)

Precaution of Use: This product contains Thimerosal (Merthiolate): a POISONOUS AND HAZARDOUS SUBSTANCE which should be handled by trained staff only.

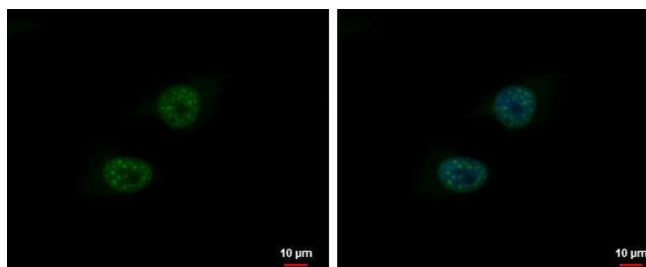
Storage: -20 °C

Storage Comment: Keep as concentrated solution. Aliquot and store at -20°C or below. Avoid multiple freeze-thaw cycles.



Western Blotting

Image 1. WB Image BLM antibody detects BLM protein by western blot analysis. A. 30 μ g Jurkat whole cell lysate/extract B. 30 μ g Raji whole cell lysate/extract C. 30 μ g NCI-H929 whole cell lysate/extract 5 % SDS-PAGE BLM antibody , dilution: 1:500



Immunofluorescence

Image 2. ICC/IF Image BLM antibody [N1N2], N-term detects BLM protein at nucleus by immunofluorescent analysis. Sample: HeLa cells were fixed in 4% paraformaldehyde at RT for 15 min. Green: BLM protein stained by BLM antibody [N1N2], N-term , diluted at 1:500. Blue: Hoechst 33342 staining.