

Datasheet for ABIN2854327

**anti-ALDOA antibody****3** Images[Go to Product page](#)

## Overview

Quantity:	100 µL
Target:	ALDOA
Reactivity:	Human
Host:	Rabbit
Clonality:	Polyclonal
Conjugate:	This ALDOA antibody is un-conjugated
Application:	Western Blotting (WB), Immunohistochemistry (Paraffin-embedded Sections) (IHC (p))

## Product Details

Immunogen:	Recombinant protein encompassing a sequence within the center region of human Aldolase A. The exact sequence is proprietary.
Isotype:	IgG
Cross-Reactivity:	Human, Mouse, Rat
Characteristics:	Rabbit Polyclonal antibody to Aldolase A (aldolase A, fructose-bisphosphate) Aldolase A antibody
Purification:	Purified by antigen-affinity chromatography.

## Target Details

Target:	ALDOA
Alternative Name:	aldolase, fructose-bisphosphate A ( <a href="#">ALDOA Products</a> )

## Target Details

Background:	This gene product, Aldolase A (fructose-bisphosphate aldolase) is a glycolytic enzyme that catalyzes the reversible conversion of fructose-1,6-bisphosphate to glyceraldehyde 3-phosphate and dihydroxyacetone phosphate. Three aldolase isozymes (A, B, and C), encoded by three different genes, are differentially expressed during development. Aldolase A is found in the developing embryo and is produced in even greater amounts in adult muscle. Aldolase A expression is repressed in adult liver, kidney and intestine and similar to aldolase C levels in brain and other nervous tissue. Aldolase A deficiency has been associated with myopathy and hemolytic anemia. Alternative splicing of this gene results in multiple transcript variants which encode the same protein.
Molecular Weight:	39 kDa
Gene ID:	226
UniProt:	<a href="#">P04075</a>
Pathways:	<a href="#">Ribonucleoside Biosynthetic Process</a>

## Application Details

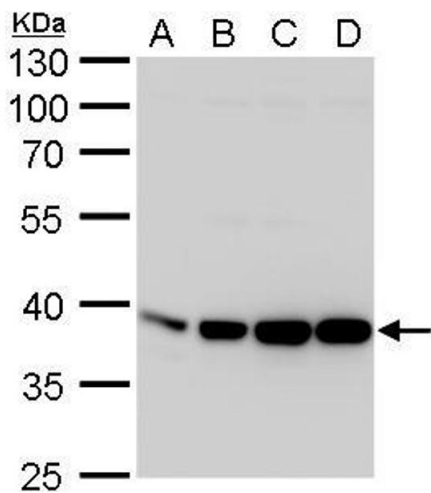
Application Notes:	WB: 1:500-1:3000. IHC-P: 1:100-1:1000. Optimal dilutions/concentrations should be determined by the researcher. Not tested in other applications.
Comment:	Positive Control: 293T , A431 , HeLa , HepG2 , mouse brain , rat brain
Restrictions:	For Research Use only

## Handling

Format:	Liquid
Concentration:	0.58 mg/mL
Buffer:	0.1M Tris-Glycine ( pH 7), 20 % Glycerol, 0.01 % Thimerosal
Preservative:	Thimerosal (Merthiolate)
Precaution of Use:	This product contains Thimerosal (Merthiolate): a POISONOUS AND HAZARDOUS SUBSTANCE which should be handled by trained staff only.
Storage:	4 °C,-20 °C
Storage Comment:	Store as concentrated solution. Centrifuge briefly prior to opening vial. For short-term storage (1-2 weeks), store at 4°C. For long-term storage, aliquot and store at -20°C or below. Avoid

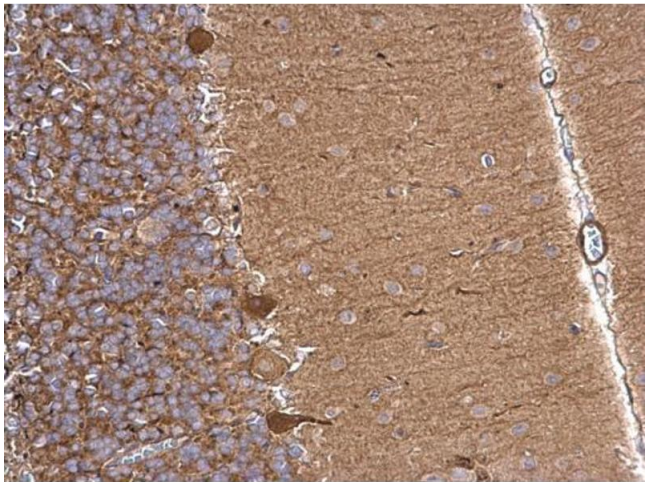
multiple freeze-thaw cycles.

Validation report #104404 for Cleavage Under Targets and Release Using Nuclease (CUT&RUN)



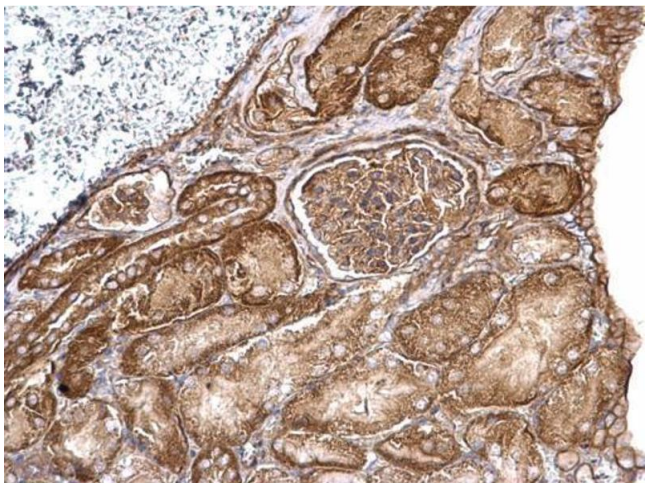
Western Blotting

**Image 1.** WB Image Aldolase A antibody detects Aldolase A protein by western blot analysis. A. 30 µg 293T whole cell lysate/extract B. 30 µg A431 whole cell lysate/extract C. 30 µg HeLa whole cell lysate/extract D. 30 µg HepG2 whole cell lysate/extract 10 % SDS-PAGE Aldolase A antibody , dilution: 1:1000



Immunohistochemistry

**Image 2.** IHC-P Image Aldolase A antibody detects Aldolase A protein at cytosol on rat hind brain by immunohistochemical analysis. Sample: Paraffin-embedded rat hind brain. Aldolase A antibody , dilution: 1:500.



Immunohistochemistry

**Image 3.** IHC-P Image Aldolase A antibody detects Aldolase A protein at cytosol on mouse kidney by immunohistochemical analysis. Sample: Paraffin-embedded mouse kidney. Aldolase A antibody , dilution: 1:500.