

Datasheet for ABIN2854329
anti-CPNE1 antibody (N-Term)[Go to Product page](#)

1 Image

Overview

Quantity:	100 µL
Target:	CPNE1
Binding Specificity:	N-Term
Reactivity:	Human
Host:	Rabbit
Clonality:	Polyclonal
Conjugate:	This CPNE1 antibody is un-conjugated
Application:	Western Blotting (WB)

Product Details

Immunogen:	Recombinant protein encompassing a sequence within the N-terminus region of human Copine 1. The exact sequence is proprietary.
Isotype:	IgG
Cross-Reactivity:	Human
Characteristics:	Rabbit Polyclonal antibody to Copine I (copine I) Copine I antibody [N1N3]
Purification:	Purified by antigen-affinity chromatography.

Target Details

Target:	CPNE1
---------	-------

Target Details

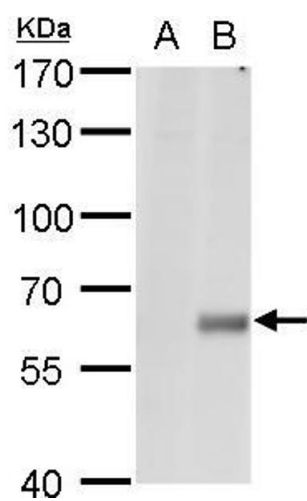
Alternative Name:	copine 1 (CPNE1 Products)
Background:	Calcium-dependent membrane-binding proteins may regulate molecular events at the interface of the cell membrane and cytoplasm. This gene encodes a calcium-dependent protein that also contains two N-terminal type II C2 domains and an integrin A domain-like sequence in the C-terminus. However, the encoded protein does not contain a predicted signal sequence or transmembrane domains. This protein has a broad tissue distribution and it may function in membrane trafficking. This gene and the gene for RNA binding motif protein 12 overlap at map location 20q11.21. Alternate splicing results in multiple transcript variants encoding different proteins.
Molecular Weight:	59 kDa
Gene ID:	8904
UniProt:	Q99829

Application Details

Application Notes:	WB: 1:1000-1:20000. Optimal dilutions/concentrations should be determined by the researcher. Not tested in other applications.
Comment:	Positive Control: 3xFlag-human CPNE1-transfected 293T cells
Restrictions:	For Research Use only

Handling

Format:	Liquid
Concentration:	0.48 mg/mL
Buffer:	1XPBS (pH 7), 10 % Glycerol, 0.01 % Thimerosal
Preservative:	Thimerosal (Merthiolate)
Precaution of Use:	This product contains Thimerosal (Merthiolate): a POISONOUS AND HAZARDOUS SUBSTANCE which should be handled by trained staff only.
Storage:	4 °C, -20 °C
Storage Comment:	Store as concentrated solution. Centrifuge briefly prior to opening vial. For short-term storage (1-2 weeks), store at 4°C. For long-term storage, aliquot and store at -20°C or below. Avoid multiple freeze-thaw cycles.



Western Blotting

Image 1. WB Image Copine I antibody [N1N3] detects Copine I protein by western blot analysis. A. 30 µg 293T whole cell lysate/extract B. 30 µg whole cell lysate/extract of 3xFlag-human CPNE1-transfected 293T cells 7.5 % SDS-PAGE Copine I antibody [N1N3] , dilution: 1:5000