

Datasheet for ABIN2854330
anti-DYNC1H1 antibody[Go to Product page](#)

2 Images

Overview

Quantity:	100 µL
Target:	DYNC1H1
Reactivity:	Human
Host:	Rabbit
Clonality:	Polyclonal
Conjugate:	This DYNC1H1 antibody is un-conjugated
Application:	Western Blotting (WB), Immunofluorescence (IF), Immunocytochemistry (ICC)

Product Details

Immunogen:	Recombinant protein corresponding to human DYNC1H1
Isotype:	IgG
Cross-Reactivity:	Human
Characteristics:	Rabbit Polyclonal antibody to DYNC1H1 (dynein, cytoplasmic 1, heavy chain 1) DYNC1H1 antibody
Purification:	Purified by antigen-affinity chromatography.

Target Details

Target:	DYNC1H1
Alternative Name:	dynein cytoplasmic 1 heavy chain 1 (DYNC1H1 Products)
Background:	Dyneins are a group of microtubule-activated ATPases that function as molecular motors. They

Target Details

are divided into two subgroups of axonemal and cytoplasmic dyneins. The cytoplasmic dyneins function in intracellular motility, including retrograde axonal transport, protein sorting, organelle movement, and spindle dynamics. Molecules of conventional cytoplasmic dynein are comprised of 2 heavy chain polypeptides and a number of intermediate and light chains. This gene encodes a member of the cytoplasmic dynein heavy chain family.

Molecular Weight: 532 kDa

Gene ID: 1778

UniProt: [Q14204](#)

Pathways: [M Phase](#), [Ribonucleoprotein Complex Subunit Organization](#)

Application Details

Application Notes: WB: 1:500-1:3000. Optimal dilutions/concentrations should be determined by the researcher.
Not tested in other applications.

Comment: Positive Control: SK-N-SH , SK-N-AS , NT2D1

Restrictions: For Research Use only

Handling

Format: Liquid

Concentration: 0.89 mg/mL

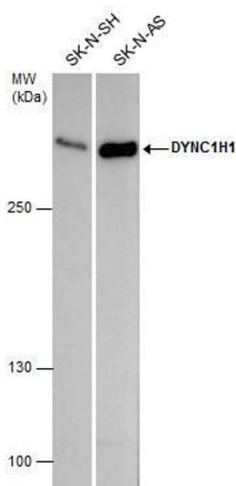
Buffer: 1XPBS (pH 7), 1 % BSA, 20 % Glycerol, 0.01 % Thimerosal

Preservative: Thimerosal (Merthiolate)

Precaution of Use: This product contains Thimerosal (Merthiolate): a POISONOUS AND HAZARDOUS SUBSTANCE which should be handled by trained staff only.

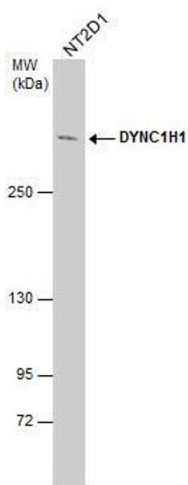
Storage: 4 °C, -20 °C

Storage Comment: Store as concentrated solution. Centrifuge briefly prior to opening vial. For short-term storage (1-2 weeks), store at 4°C. For long-term storage, aliquot and store at -20°C or below. Avoid multiple freeze-thaw cycles.



Western Blotting

Image 1. WB Image DYNC1H1 antibody detects DYNC1H1 protein by western blot analysis. Various whole cell extracts (30 µg) were separated by 5 % SDS-PAGE, and blotted with DYNC1H1 antibody , diluted by 1:500



Western Blotting

Image 2. WB Image DYNC1H1 antibody detects DYNC1H1 protein by western blot analysis. Whole cell extracts (30 µg) was separated by 5% SDS-PAGE, and the membrane was blotted with DYNC1H1 antibody , at a dilution of 1:500.