

Datasheet for ABIN2854331

**anti-RAB1A antibody**[Go to Product page](#)**1** Image

## Overview

Quantity:	100 µL
Target:	RAB1A
Reactivity:	Human
Host:	Rabbit
Clonality:	Polyclonal
Conjugate:	This RAB1A antibody is un-conjugated
Application:	Western Blotting (WB)

## Product Details

Immunogen:	Recombinant protein encompassing a sequence within the center region of human Rab 1A. The exact sequence is proprietary.
Isotype:	IgG
Specificity:	Based on sequence homology, this antibody may cross react with RAB1B protein.
Cross-Reactivity:	Human, Mouse, Rat
Characteristics:	Rabbit polyclonal antibody to RAB1A (RAB1A, member RAS oncogene family) Rab 1A antibody [N1C3]
Purification:	Purified by antigen-affinity chromatography.

## Target Details

Target:	RAB1A
---------	-------

## Target Details

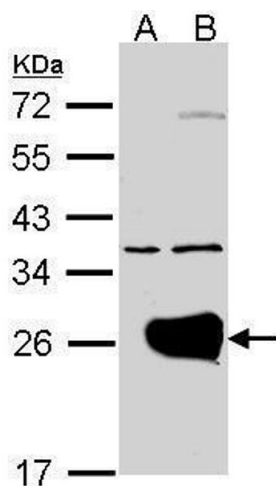
Alternative Name:	RAB1A, member RAS oncogene family ( <a href="#">RAB1A Products</a> )
Background:	<p>This gene encodes a member of the Ras superfamily of GTPases. Members of the gene family cycle between inactive GDP-bound and active GTP-bound forms. This small GTPase controls vesicle traffic from the endoplasmic reticulum to the Golgi apparatus. Multiple alternatively spliced transcript variants have been identified for this gene which encode different protein isoforms.</p> <p>Cellular Localization: Golgi apparatus , Endoplasmic reticulum</p>
Molecular Weight:	23 kDa
Gene ID:	5861
UniProt:	<a href="#">P62820</a>
Pathways:	<a href="#">SARS-CoV-2 Protein Interactome</a>

## Application Details

Application Notes:	WB: 1:500-1:3000. Optimal dilutions/concentrations should be determined by the researcher. Not tested in other applications.
Comment:	Positive Control: RAB1A transfected 293T , mouse colon , U87-MG , SK-N-SH , rat brain
Restrictions:	For Research Use only

## Handling

Format:	Liquid
Concentration:	0.26 mg/mL
Buffer:	0.1M Tris-Glycine ( pH 7), 10 % Glycerol, 0.01 % Thimerosal
Preservative:	Thimerosal (Merthiolate)
Precaution of Use:	This product contains Thimerosal (Merthiolate): a POISONOUS AND HAZARDOUS SUBSTANCE which should be handled by trained staff only.
Storage:	4 °C, -20 °C
Storage Comment:	Store as concentrated solution. Centrifuge briefly prior to opening vial. For short-term storage (1-2 weeks), store at 4°C. For long-term storage, aliquot and store at -20°C or below. Avoid multiple freeze-thaw cycles.



Western Blotting

**Image 1.** WB Image Western Blot analysis of RAB1A expression in transfected 293T cell line by RAB1A polyclonal antibody. A: Non-transfected lysate. B: RAB1A transfected lysate. 12% SDS PAGE antibody diluted at 1:500