



[Go to Product page](#)

Datasheet for ABIN2854340  
**anti-ALT antibody (N-Term)**

2 Images

Overview

Quantity:	100 µL
Target:	ALT
Binding Specificity:	N-Term
Reactivity:	Human
Host:	Rabbit
Clonality:	Polyclonal
Conjugate:	This ALT antibody is un-conjugated
Application:	Western Blotting (WB)

Product Details

Immunogen:	Recombinant protein encompassing a sequence within the N-terminus region of human GPT. The exact sequence is proprietary.
Isotype:	IgG
Cross-Reactivity:	Human, Mouse
Characteristics:	Rabbit Polyclonal antibody to GPT (glutamic-pyruvate transaminase (alanine aminotransferase)) GPT antibody [N1N3]
Purification:	Purified by antigen-affinity chromatography.

Target Details

Target:	ALT
---------	-----

## Target Details

---

Alternative Name: glutamic-pyruvic transaminase ([ALT Products](#))

Background: Glutamate-pyruvate transaminase (EC 2.6.1.2), also known as alanine aminotransferase, catalyzes the reversible conversion of L-alanine and alpha-ketoglutarate to L-glutamate and pyruvate. It has 2 distinct molecular and genetic forms: one cytoplasmic (soluble) (GPT1) and one mitochondrial (GPT2, MIM 138210). See ALTQTL1 (MIM 612363) and ALTQTL2 (MIM 612364) for information on quantitative trait loci influencing the plasma level of alanine aminotransferase.[supplied by OMIM]

Cellular Localization: Cytoplasm

Molecular Weight: 55 kDa

Gene ID: 2875

UniProt: [P24298](#)

## Application Details

---

Application Notes: WB: 1:500-1:3000. Optimal dilutions/concentrations should be determined by the researcher. Not tested in other applications.

Comment: Positive Control: A431 , HeLa , mouse liver

Restrictions: For Research Use only

## Handling

---

Format: Liquid

Concentration: 0.47 mg/mL

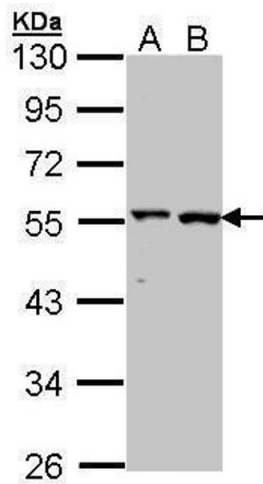
Buffer: 0.1M Tris-Glycine ( pH 7), 10 % Glycerol, 0.01 % Thimerosal

Preservative: Thimerosal (Merthiolate)

Precaution of Use: This product contains Thimerosal (Merthiolate): a POISONOUS AND HAZARDOUS SUBSTANCE which should be handled by trained staff only.

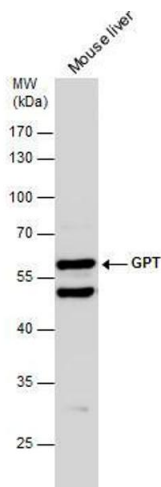
Storage: 4 °C,-20 °C

Storage Comment: Store as concentrated solution. Centrifuge briefly prior to opening vial. For short-term storage (1-2 weeks), store at 4°C. For long-term storage, aliquot and store at -20°C or below. Avoid multiple freeze-thaw cycles.



#### Western Blotting

**Image 1.** WB Image Sample (30 ug of whole cell lysate) A: A431 , B: HeLa 10% SDS PAGE antibody diluted at 1:1000



#### Western Blotting

**Image 2.** WB Image Mouse tissue extract (50 µg) was separated by 10% SDS-PAGE, and the membrane was blotted with GPT antibody [N1N3] , diluted at 1:500.