

Datasheet for ABIN2854341

anti-DOK2 antibody

3 Images



[Go to Product page](#)

Overview

Quantity:	100 µL
Target:	DOK2
Reactivity:	Human
Host:	Rabbit
Clonality:	Polyclonal
Conjugate:	This DOK2 antibody is un-conjugated
Application:	Western Blotting (WB), Immunofluorescence (IF), Immunocytochemistry (ICC)

Product Details

Immunogen:	Recombinant protein encompassing a sequence within the center region of human DOK2. The exact sequence is proprietary.
Isotype:	IgG
Cross-Reactivity:	Human
Characteristics:	Rabbit polyclonal antibody to DOK2 (docking protein 2, 56 kDa) DOK2 antibody [N1C1]
Purification:	Purified by antigen-affinity chromatography.

Target Details

Target:	DOK2
Alternative Name:	docking protein 2 (DOK2 Products)

Target Details

Background: The protein encoded by this gene is constitutively tyrosine phosphorylated in hematopoietic progenitors isolated from chronic myelogenous leukemia (CML) patients in the chronic phase. It may be a critical substrate for p210(bcr/abl), a chimeric protein whose presence is associated with CML. This encoded protein binds p120 (RasGAP) from CML cells.

Molecular Weight: 45 kDa

Gene ID: 9046

UniProt: [O60496](#)

Application Details

Application Notes: WB: 1:5000-1:20000. ICC/IF: 1:100-1:1000. Optimal dilutions/concentrations should be determined by the researcher. Not tested in other applications.

Comment: Positive Control: 293T , Jurkat , Raji , NCI-H929

Restrictions: For Research Use only

Handling

Format: Liquid

Concentration: 1 mg/mL

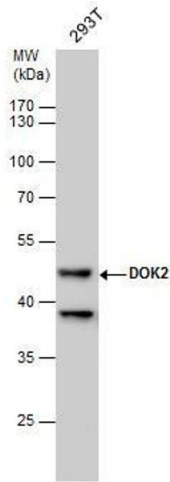
Buffer: 1XPBS (pH 7), 1 % BSA, 20 % Glycerol, 0.01 % Thimerosal

Preservative: Thimerosal (Merthiolate)

Precaution of Use: This product contains Thimerosal (Merthiolate): a POISONOUS AND HAZARDOUS SUBSTANCE which should be handled by trained staff only.

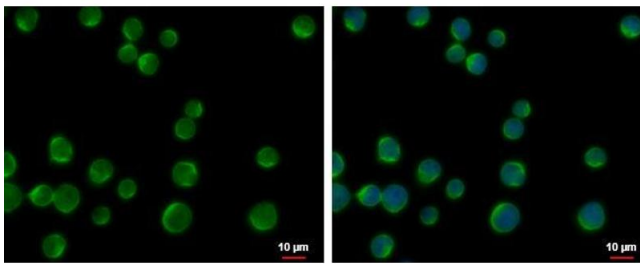
Storage: 4 °C,-20 °C

Storage Comment: Store as concentrated solution. Centrifuge briefly prior to opening vial. For short-term storage (1-2 weeks), store at 4°C. For long-term storage, aliquot and store at -20°C or below. Avoid multiple freeze-thaw cycles.



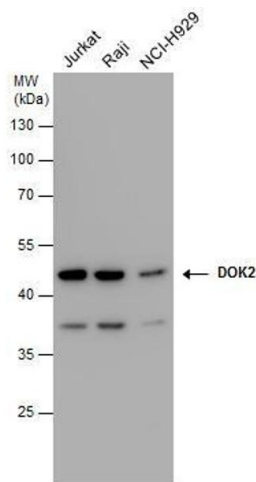
Western Blotting

Image 1. WB Image DOK2 antibody [N1C1] detects DOK2 protein by western blot analysis. Whole cell extracts (30 µg) was separated by 10% SDS-PAGE, and the membrane was blotted with DOK2 antibody [N1C1], at a dilution of 1:10000.



Immunofluorescence

Image 2. ICC/IF Image DOK2 antibody [N1C1] detects DOK2 protein at cytoplasm by immunofluorescent analysis. Sample: Jurkat cells were fixed in 4% paraformaldehyde at RT for 15 min. Green: DOK2 protein stained by DOK2 antibody [N1C1], diluted at 1:500. Blue: Hoechst 33342 staining. Scale bar = 10 µm.



Western Blotting

Image 3. WB Image DOK2 antibody detects DOK2 protein by western blot analysis. Various whole cell extracts (30 µg) were separated by 10% SDS-PAGE, and the membrane was blotted with DOK2 antibody, diluted at a dilution of 1:10000.