



[Go to Product page](#)

Datasheet for ABIN2854342

anti-NKX2-8 antibody

1 Image

Overview

Quantity:	100 µL
Target:	NKX2-8
Reactivity:	Human
Host:	Rabbit
Clonality:	Polyclonal
Conjugate:	This NKX2-8 antibody is un-conjugated
Application:	Western Blotting (WB)

Product Details

Immunogen:	Recombinant protein encompassing a sequence within the center region of human NKX2.8. The exact sequence is proprietary.
Isotype:	IgG
Cross-Reactivity:	Human
Characteristics:	Rabbit polyclonal antibody to NKX2-8 (NK2 homeobox 8) NKX2-8 antibody [N1C2]
Purification:	Purified by antigen-affinity chromatography.

Target Details

Target:	NKX2-8
Alternative Name:	NK2 homeobox 8 (NKX2-8 Products)

Target Details

Background: Cellular Localization: Nucleus

Molecular Weight: 26 kDa

Gene ID: 26257

UniProt: [O15522](#)

Application Details

Application Notes: WB: 1:500-1:3000. Optimal dilutions/concentrations should be determined by the researcher.
Not tested in other applications.

Comment: Positive Control: HepG2 , Molt-4 , Raji

Restrictions: For Research Use only

Handling

Format: Liquid

Concentration: 1 mg/mL

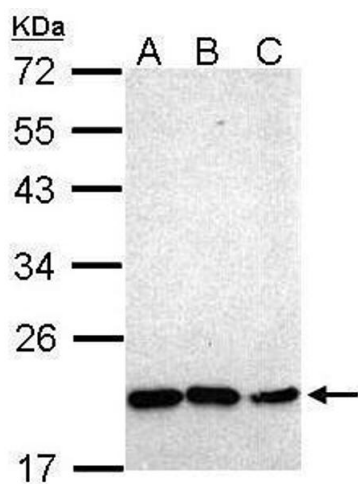
Buffer: 0.1M Tris-Glycine (pH 7), 10 % Glycerol, 0.01 % Thimerosal

Preservative: Thimerosal (Merthiolate)

Precaution of Use: This product contains Thimerosal (Merthiolate): a POISONOUS AND HAZARDOUS SUBSTANCE which should be handled by trained staff only.

Storage: 4 °C,-20 °C

Storage Comment: Store as concentrated solution. Centrifuge briefly prior to opening vial. For short-term storage (1-2 weeks), store at 4°C. For long-term storage, aliquot and store at -20°C or below. Avoid multiple freeze-thaw cycles.



Western Blotting

Image 1. WB Image Sample (30 ug of whole cell lysate) A: Hep G2 , B: Molt-4 , C: Raji 12% SDS PAGE antibody diluted at 1:1000