



[Go to Product page](#)

Datasheet for ABIN2854344

anti-Chitotriosidase 1 antibody

1 Image

Overview

Quantity:	100 µL
Target:	Chitotriosidase 1 (CHIT1)
Reactivity:	Human
Host:	Rabbit
Clonality:	Polyclonal
Conjugate:	This Chitotriosidase 1 antibody is un-conjugated
Application:	Western Blotting (WB)

Product Details

Immunogen:	Recombinant protein encompassing a sequence within the center region of human CHIT1. The exact sequence is proprietary.
Isotype:	IgG
Cross-Reactivity:	Human
Characteristics:	Rabbit polyclonal antibody to Chitotriosidase (chitinase 1 (chitotriosidase)) Chitotriosidase antibody [N3C3]
Purification:	Purified by antigen-affinity chromatography.

Target Details

Target:	Chitotriosidase 1 (CHIT1)
Alternative Name:	chitinase 1 (CHIT1 Products)

Target Details

Background: Chitotriosidase is secreted by activated human macrophages and is markedly elevated in plasma of Gaucher disease patients. The expression of chitotriosidase occurs only at a late stage of differentiation of monocytes to activated macrophages in culture. Human macrophages can synthesize a functional chitotriosidase, a highly conserved enzyme with a strongly regulated expression. This enzyme may play a role in the degradation of chitin-containing pathogens.

Cellular Localization: Secreted , Lysosome

Molecular Weight: 52 kDa

Gene ID: 1118

UniProt: [Q13231](#)

Application Details

Application Notes: WB: 1:500-1:3000. Optimal dilutions/concentrations should be determined by the researcher. Not tested in other applications.

Comment: Positive Control: HeLa

Restrictions: For Research Use only

Handling

Format: Liquid

Concentration: 1 mg/mL

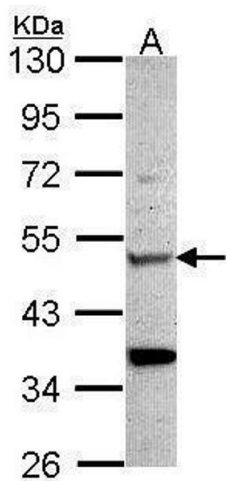
Buffer: 0.1M Tris-Glycine (pH 7), 10 % Glycerol, 0.01 % Thimerosal

Preservative: Thimerosal (Merthiolate)

Precaution of Use: This product contains Thimerosal (Merthiolate): a POISONOUS AND HAZARDOUS SUBSTANCE which should be handled by trained staff only.

Storage: 4 °C,-20 °C

Storage Comment: Store as concentrated solution. Centrifuge briefly prior to opening vial. For short-term storage (1-2 weeks), store at 4°C. For long-term storage, aliquot and store at -20°C or below. Avoid multiple freeze-thaw cycles.



Western Blotting

Image 1. WB Image Sample (30 ug of whole cell lysate) A:
Hela 10% SDS PAGE antibody diluted at 1:1000