



[Go to Product page](#)

Datasheet for ABIN2854345

## anti-ILK antibody

6 Images

1 Publication

### Overview

Quantity:	100 µL
Target:	ILK
Reactivity:	Human
Host:	Rabbit
Clonality:	Polyclonal
Conjugate:	This ILK antibody is un-conjugated
Application:	Western Blotting (WB), Immunohistochemistry (IHC), Immunohistochemistry (Paraffin-embedded Sections) (IHC (p)), Immunoprecipitation (IP), Immunohistochemistry (Whole Mount) (IHC (wm))

### Product Details

Immunogen:	Recombinant protein encompassing a sequence within the center region of human ILK. The exact sequence is proprietary.
Isotype:	IgG
Cross-Reactivity:	Human, Mouse, Rat, Zebrafish (Danio rerio)
Characteristics:	Rabbit Polyclonal antibody to CKR5 (integrin-linked kinase) ILK antibody [N1C1]
Purification:	Purified by antigen-affinity chromatography.
Grade:	KO Validated

## Target Details

---

Target:	ILK
Alternative Name:	integrin linked kinase ( <a href="#">ILK Products</a> )
Background:	<p>Transduction of extracellular matrix signals through integrins influences intracellular and extracellular functions, and appears to require interaction of integrin cytoplasmic domains with cellular proteins. Integrin-linked kinase (ILK), interacts with the cytoplasmic domain of beta-1 integrin. This gene encodes a serine/threonine protein kinase with 4 ankyrin-like repeats, which associates with the cytoplasmic domain of beta integrins and acts as a proximal receptor kinase regulating integrin-mediated signal transduction. Multiple alternatively spliced transcript variants encoding the same protein have been found for this gene.</p> <p>Cellular Localization: Cell junction , focal adhesion , Cell membrane, Peripheral membrane protein, Cytoplasmic side</p>
Molecular Weight:	51 kDa
Gene ID:	3611
UniProt:	<a href="#">Q13418</a>
Pathways:	<a href="#">Regulation of Muscle Cell Differentiation</a> , <a href="#">Regulation of Cell Size</a> , <a href="#">Maintenance of Protein Location</a> , <a href="#">Skeletal Muscle Fiber Development</a> , <a href="#">Smooth Muscle Cell Migration</a>

## Application Details

---

Application Notes:	WB: 1:500-1:3000. IHC-P: 1:100-1:1000. IP: 1:100-1:500. Optimal dilutions/concentrations should be determined by the researcher. Not tested in other applications.
Comment:	Positive Control: A431 , Neuro2A , C8D30 , NIH-3T3 , C2C12 , PC-12 , Neuro 2A , C8D30 , Raw264.7 , HeLa Validation: KO/KD
Restrictions:	For Research Use only

## Handling

---

Format:	Liquid
Concentration:	0.8 mg/mL
Buffer:	0.1M Tris-Glycine ( pH 7), 10 % Glycerol, 0.01 % Thimerosal
Preservative:	Thimerosal (Merthiolate)

## Handling

Precaution of Use: This product contains Thimerosal (Merthiolate): a POISONOUS AND HAZARDOUS SUBSTANCE which should be handled by trained staff only.

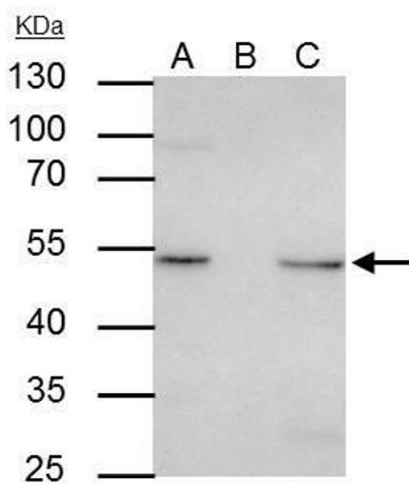
Storage: 4 °C, -20 °C

Storage Comment: Store as concentrated solution. Centrifuge briefly prior to opening vial. For short-term storage (1-2 weeks), store at 4°C. For long-term storage, aliquot and store at -20°C or below. Avoid multiple freeze-thaw cycles.

## Publications

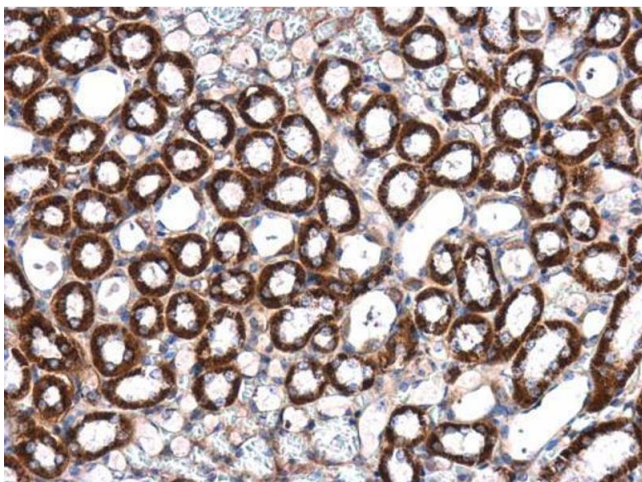
Product cited in: Rodriguez-Gil, Hu, Greer: "Dishevelled proteins are associated with olfactory sensory neuron presynaptic terminals." in: **PLoS ONE**, Vol. 8, Issue 2, pp. e56561, (2013) ([PubMed](#)).

## Validation report #104437 for Cleavage Under Targets and Release Using Nuclease (CUT&RUN)



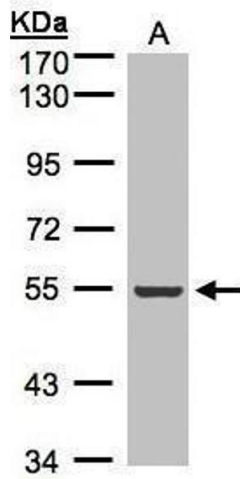
### Immunoprecipitation

**Image 1.** IP Image ILK antibody [N1C1] immunoprecipitates ILK protein in IP experiments. IP samples: HeLa whole cell extract A. 30 µg HeLa whole cell extract B. Control with 4 µg of preimmune Rabbit IgG C. Immunoprecipitation of ILK protein by 4 µg ILK antibody [N1C1], 10 % SDS-PAGE The immunoprecipitated ILK protein was detected by ILK antibody [N1C1], diluted at 1:500. [EasyBlot anti-rabbit IgG was used as a secondary reagent]



### Immunohistochemistry

**Image 2.** IHC-P Image ILK antibody [N1C1] detects ILK protein at cytoplasm in mouse kidney by immunohistochemical analysis. Sample: Paraffin-embedded mouse kidney. ILK antibody [N1C1], diluted at 1:500.



### Western Blotting

**Image 3.** WB Image Sample(30  $\mu$ g of whole cell lysate)  
A:A431, 7.5% SDS PAGE antibody diluted at 1:500

Please check the [product details page](#) for more images. Overall 6 images are available for ABIN2854345.