

Datasheet for ABIN2854346

anti-SGSH antibody[Go to Product page](#)**1** Image

Overview

Quantity:	100 µL
Target:	SGSH
Reactivity:	Human
Host:	Rabbit
Clonality:	Polyclonal
Conjugate:	This SGSH antibody is un-conjugated
Application:	Western Blotting (WB)

Product Details

Immunogen:	Recombinant protein encompassing a sequence within the center region of human SGSH. The exact sequence is proprietary.
Isotype:	IgG
Cross-Reactivity:	Human
Characteristics:	Rabbit polyclonal antibody to SGSH (N-sulfoglucosamine sulfohydrolase) SGSH antibody [N1N3]
Purification:	Affinity purified by Protein A.

Target Details

Target:	SGSH
Alternative Name:	N-sulfoglucosamine sulfohydrolase (SGSH Products)

Target Details

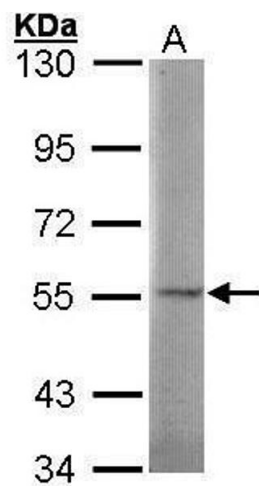
Background:	<p>This gene encodes one of several enzymes involved in the lysosomal degradation of heparan sulfate. Mutations in this gene are associated with Sanfilippo syndrome A, one type of the lysosomal storage disease mucopolysaccharidosis III, which results from impaired degradation of heparan sulfate. Transcripts of varying sizes have been reported but their biological validity has not been determined.</p> <p>Cellular Localization: Lysosome</p>
Molecular Weight:	57 kDa
Gene ID:	6448
UniProt:	P51688
Pathways:	Glycosaminoglycan Metabolic Process

Application Details

Application Notes:	<p>WB: 1:500-1:3000. Optimal dilutions/concentrations should be determined by the researcher.</p> <p>Not tested in other applications.</p>
Comment:	Positive Control: 293T
Restrictions:	For Research Use only

Handling

Format:	Liquid
Concentration:	2 mg/mL
Buffer:	1XPBS (pH 7), 40 % Glycerol, 0.01 % Thimerosal
Preservative:	Thimerosal (Merthiolate)
Precaution of Use:	This product contains Thimerosal (Merthiolate): a POISONOUS AND HAZARDOUS SUBSTANCE which should be handled by trained staff only.
Storage:	4 °C,-20 °C
Storage Comment:	Store as concentrated solution. Centrifuge briefly prior to opening vial. For short-term storage (1-2 weeks), store at 4°C. For long-term storage, aliquot and store at -20°C or below. Avoid multiple freeze-thaw cycles.



Western Blotting

Image 1. WB Image Sample (30 ug of whole cell lysate) A:
293T 7.5% SDS PAGE antibody diluted at 1:1000